

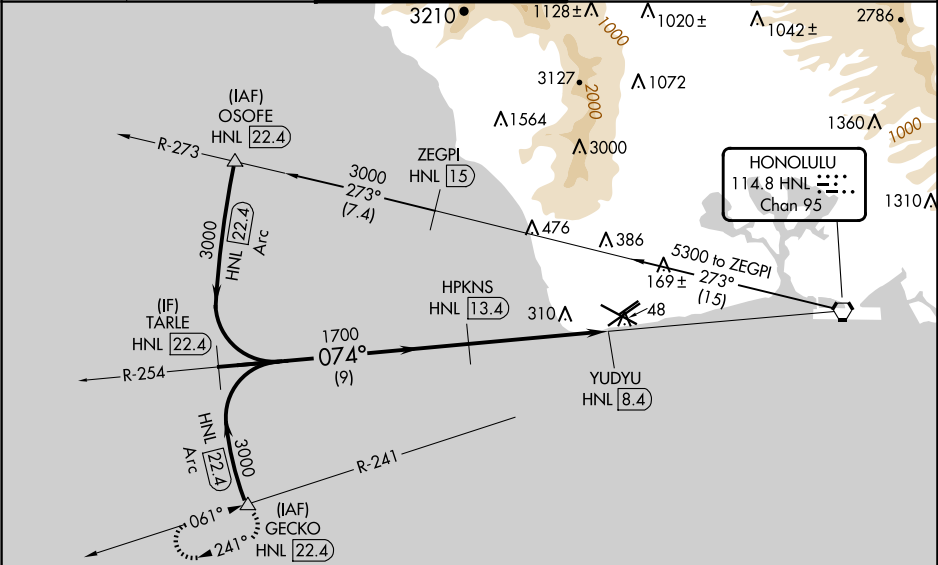
VORTAC HNL	APP CRS	Rwy Idg	7989
114.8	074°	TDZE	17
Chan 95		Apt Elev	30

VOR/DME RWY 4R

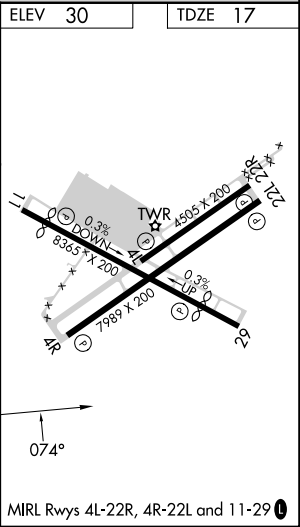
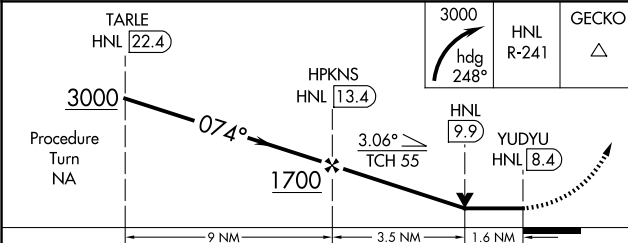
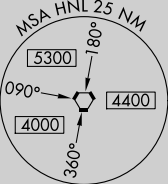
KALAELOA (JOHN RODGERS FLD) (JRF')(PHJR)

<div><div></div><div>Circling NA north of Rwy 4R-22L. Inop table does not apply.</div></div>	<div>MISSED APPROACH: Climbing right turn to 3000 via heading 248° and HNL VORTAC R-241 to GECKO/HNL 22.4 DME and hold.</div>
--------------------------------------------------------------------------------------------------	-------------------------------------------------------------------------------------------------------------------------------

ATIS 119.8	HCF APP CON 118.3 269.0	KALAELOA TOWER ★ 132.6(CTAF) 0 340.2	GND CON 123.8 336.4	CLNC DEL 121.7 380.5
---------------	----------------------------	-----------------------------------------	------------------------	-------------------------



Procedure NA for arrivals at GECKO via V16 southeast bound.



CATEGORY	A	B	C	D
S-4R	560-1 543 (600-1)	560-1½ 543 (600-1½)	560-1¾ 543 (600-1¾)	560-2 543 (600-2)
CIRCLING	560-1 530 (600-1)	560-1½ 530 (600-1½)	560-1¾ 530 (600-1¾)	580-2 550 (600-2)

PAC, 12 JUN 2025 to 07 AUG 2025

PAC, 12 JUN 2025 to 07 AUG 2025