

KALAE ONE DEPARTURE (RNAV)

AL-759 (FAA)

MOLOKAI (MKK) (PHMK)
KAUNAKAKAI, HAWAII

ATIS	128.2
GND CON	121.9
MOLOKAI TOWER ★	125.7 306.2
HCF CENTER	124.1 317.5

TOP ALTITUDE:
5000

NOTE: RNAV 1.

NOTE: GPS required.

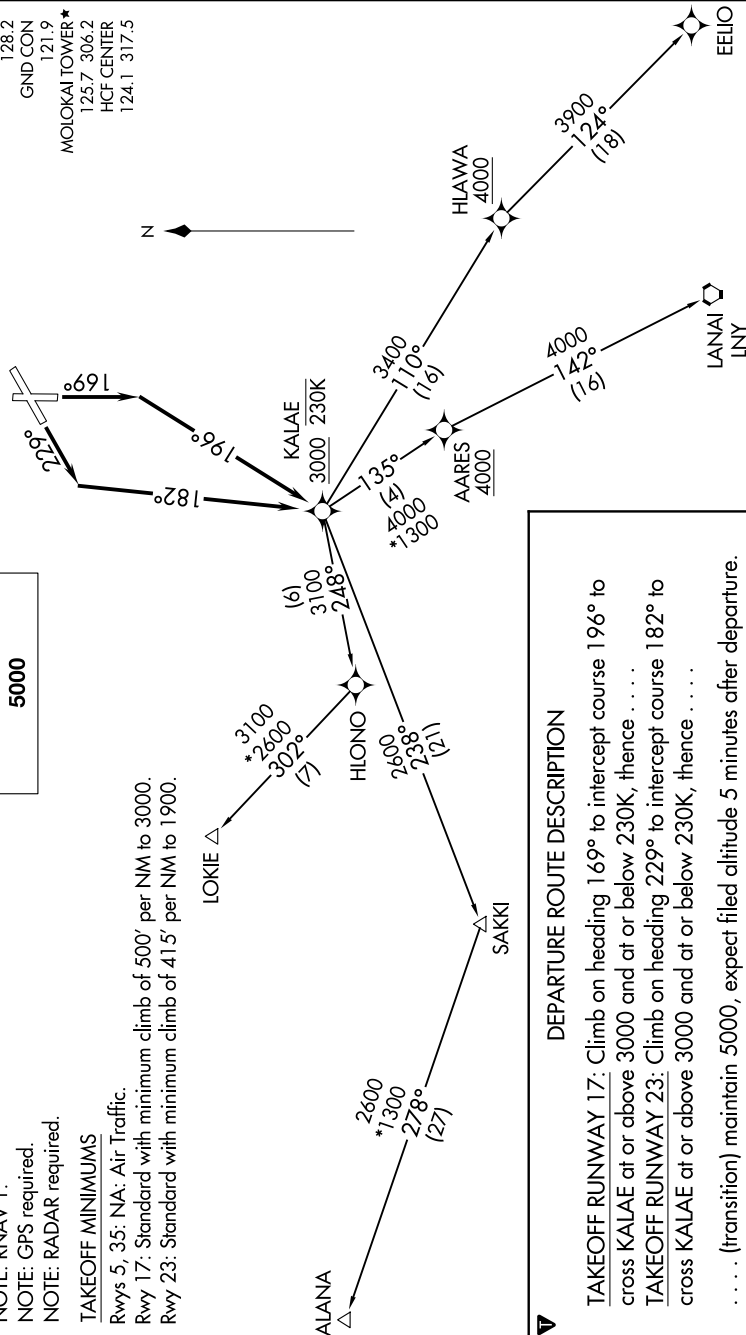
NOTE: RADAR required.

TAKEOFF MINIMUMS

Rwys 5, 35: NA: Air Traffic.

Rwy 17: Standard with minimum climb of 500' per NM to 3000.

Rwy 23: Standard with minimum climb of 415' per NM to 1900.



NOTE: Chart not to scale.

DEPARTURE ROUTE DESCRIPTION

TAKEOFF RUNWAY 17: Climb on heading 169° to intercept course 196° to cross KALAE at or above 3000 and at or below 230K, thence

TAKEOFF BLINWAY 23: Climb on heading 229° to intercept course

cross KALAE at or above 3000 and at or below 230K, thence ...

... (transition) maintain 5000, expect filed altitude 5 minutes after departure.

ALANA TRANSITION (KALAEI, ALANA)

EELIO TRANSITION (KALAE1.EELIO)

LANAI TRANSITION (KALAEI.LNY)

LOKIE TRANSITION (KALAE1.LOKIE)

KALAE ONE DEPARTURE (RNAV)

(KALAE1.KALAE) 25FEB21

KAUNAKAKAI, HAWAII

MOLOKAI (MKK) (PHMK)

PAC, 12 JUN 2025 to 07 AUG 2025