

(BLUSH2.BLUSH) 23334
BLUSH TWO DEPARTURE

AL-759 (FAA)

MOLOKAI (MKK) (PHMK)
KAUNAKAKAI, HAWAII

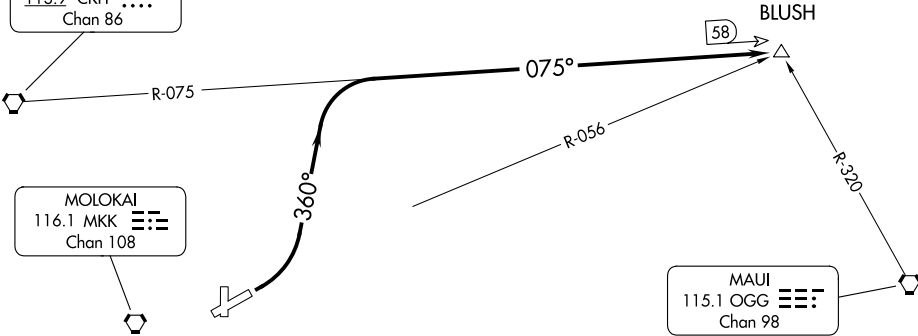
ATIS
128.2
GND CON
121.9
MOLOKAI TOWER ★
125.7 306.2
HCF CENTER
124.1 317.5

KOKO HEAD
113.9 CKH
Chan 86

MOLOKAI
116.1 MKK
Chan 108

MAUI
115.1 OGG
Chan 98

BLUSH



TAKEOFF MINIMUMS

Rwy 17, 23, 35: NA-ATC.
Rwy 5: 300-1 with minimum climb of 325' per NM to 1500 or
standard with minimum climb of 540' per NM to 800.

NOTE: Chart not to scale.



DEPARTURE ROUTE DESCRIPTION

TAKEOFF RUNWAY 5: Climbing left turn to 5000 on heading 360° and CKH VORTAC
R-075 to BLUSH INT/CKH 58 DME.