

APCH CRS	Rwy ldg	N/A
352°	TDZE	N/A
	Arpt Elev	843

[USA]

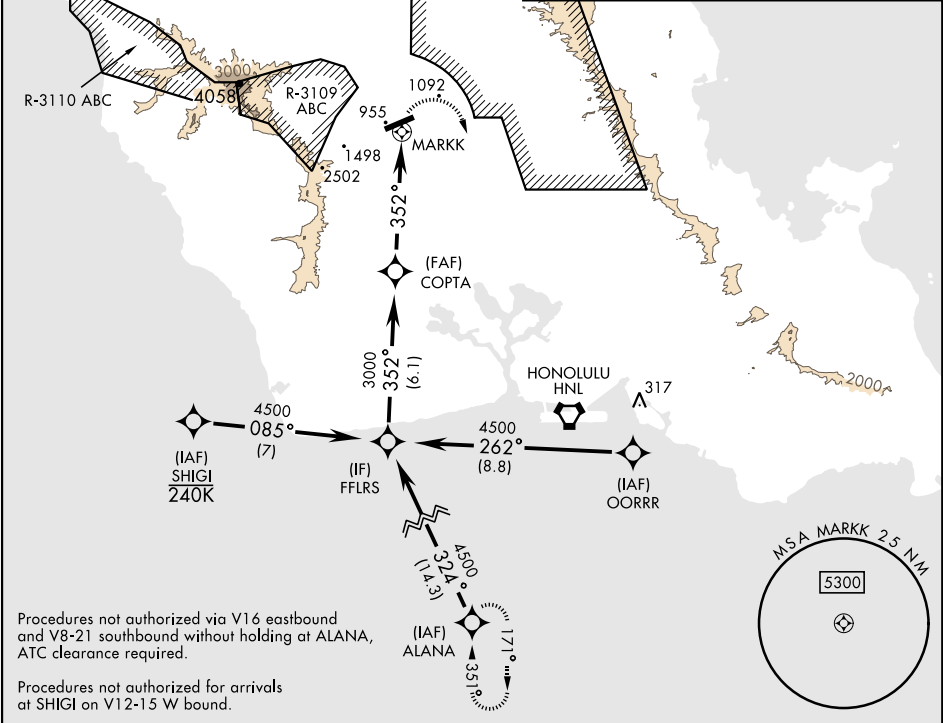
WHEELER AAF (PHHI)

RNP APCH - GPS  
DME required  
\*Circling to Rwy 24 not authorized at night.  
Circling not authorized N Rwy 6-24 when class D surface area is VFR.

MISSED APPROACH: (Do not exceed 220 KIAS until initial turn completion.) Climbing right turn to 6000 direct HNL VORTAC, track 171° to ALANA and hold.

ATIS	HCF APP CON	TOWER ★	GND CON
119.675 242.4	118.3 269.0	126.3 (CTAF) 235.625	41.5 FM 121.85 237.5

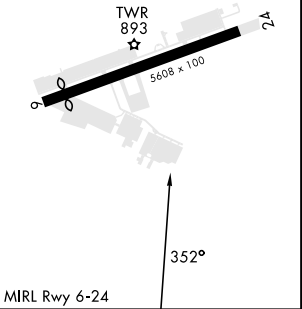
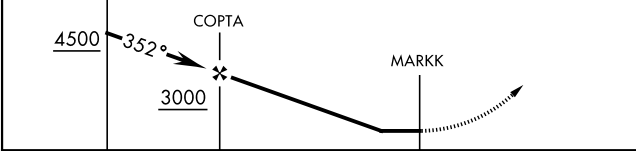
Knots	60	120	180	240	300	360
V/V(fpm)	295	590	885	1180	1475	1770
Min climb of 295 ft/NM to 3000 - Controlling Obstacle 1611						



When local altimeter not received use HNL INTL altimeter setting and minimums.

6000	HNL	ALANA

ELEV	843
Rwy 6 ldg 5038'	



CATEGORY	A	B	C	D
CIRCLING *	1400-1 557 (600-1)	1800-1½ 957 (1000-1½)	2820-3 1977 (2000-3)	NOT AUTHORIZED
DANIEL K. INOUE INTL ALTIMETER MINIMUMS				
CIRCLING *	1560-1 717 (800-1)	1960-1½ 1117 (1200-1½)	2980-3 2137 (2200-3)	NOT AUTHORIZED