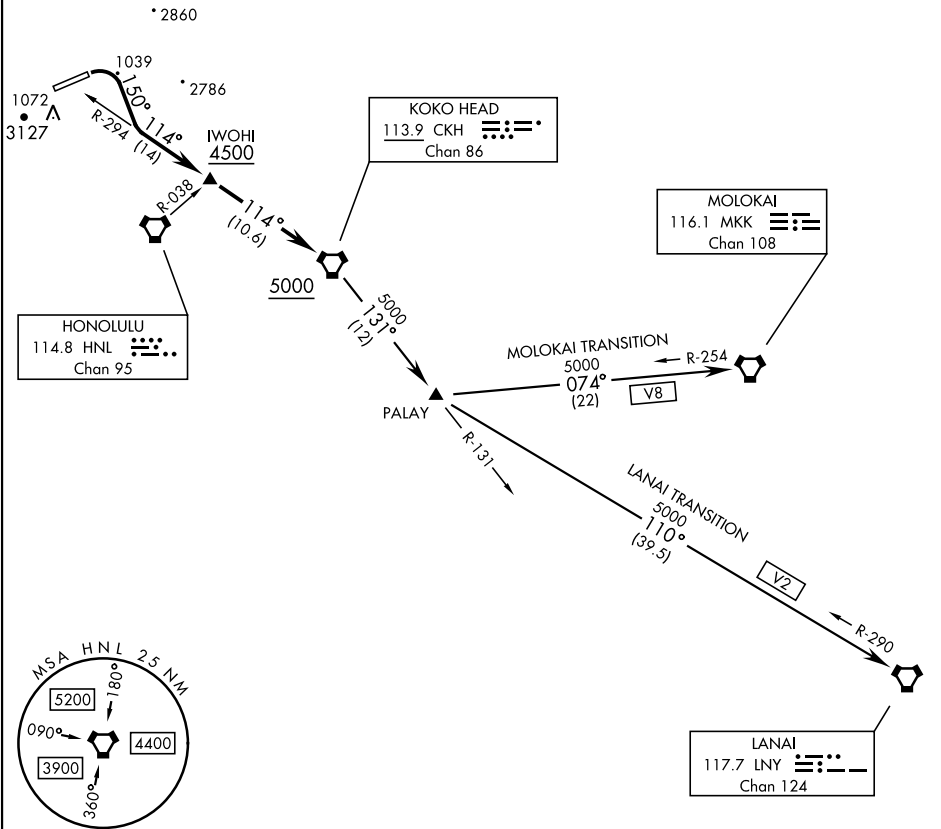


HCF APP	TOP ALTITUDE 5000		[USA]							
124.8 317.6 (E)			Rwy	Knots	60	120	180	240	300	360
118.3 269.0 (W)			*06 ⓐ V/V(fpm)	365	730	1095	1460	1825	2190	
			†06 ⓑ V/V(fpm)	302	604	906	1208	1510	1812	

- * Minimum † ATC Climb Rate
- ⓐ to 3600
- ⓑ to IWOHI to 4500



▼

DEPARTURE ROUTE DESCRIPTION

TAKEOFF RWY 06: Climbing right turn to heading 150° to intercept CKH VORTAC R-294 to cross IWOHI at or above 4500, then on CKH R-294 to cross CKH at or above 5000, thence...

LANAI TRANSITION (KOKOH2.LNY): ...from over CKH on R-131 to PALAY then on LNY VORTAC R-290 to LNY.

MOLOKAI TRANSITION (KOKOH2.MKK): ...from over CKH on R-131 to PALAY then on MKK VORTAC R-254 to MKK.