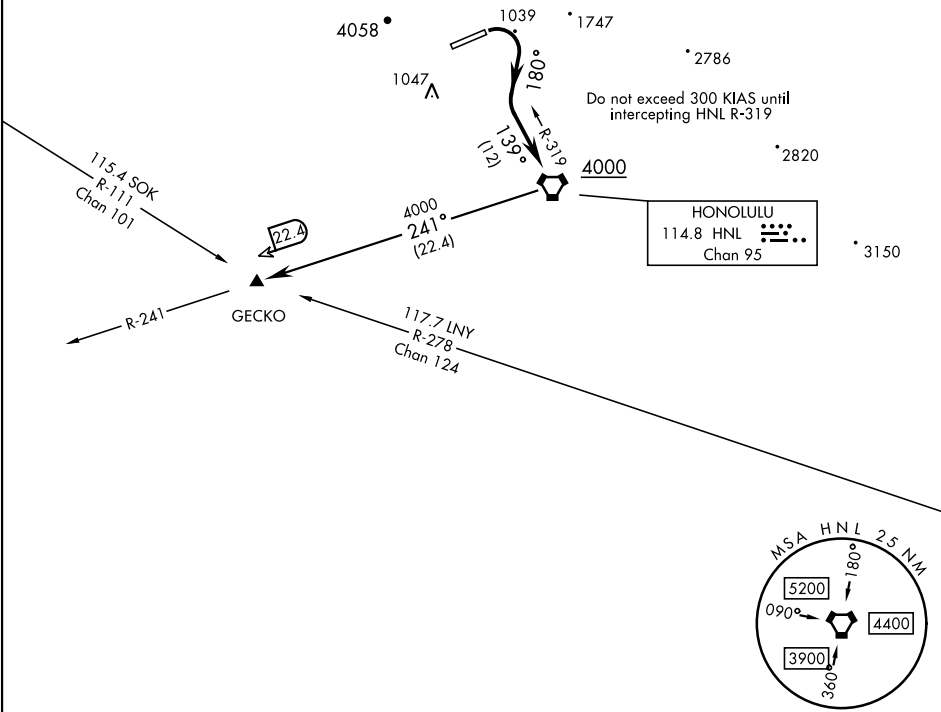


HCF APP 124.8 317.6 (E) 118.3 269.0 (W)	DME required	Rwy	Knots	60	120	180	240	300	360
	*06 ⓐ	V/V(fpm)	365	730	1095	1460	1825	2190	
	†06 ⓑ	V/V(fpm)	252	504	756	1008	1260	1512	

* Minimum † ATC Climb Rate
ⓐ to 3600
ⓑ to HNL to 4000



DEPARTURE ROUTE DESCRIPTION

TAKEOFF RWY 6: Climbing right turn via heading 180° and HNL VORTAC R-319 to cross HNL at or above 4000, then...

GECKO TRANSITION: ...via HNL R-241 to GECKO (HNL R-241/22.4 DME).