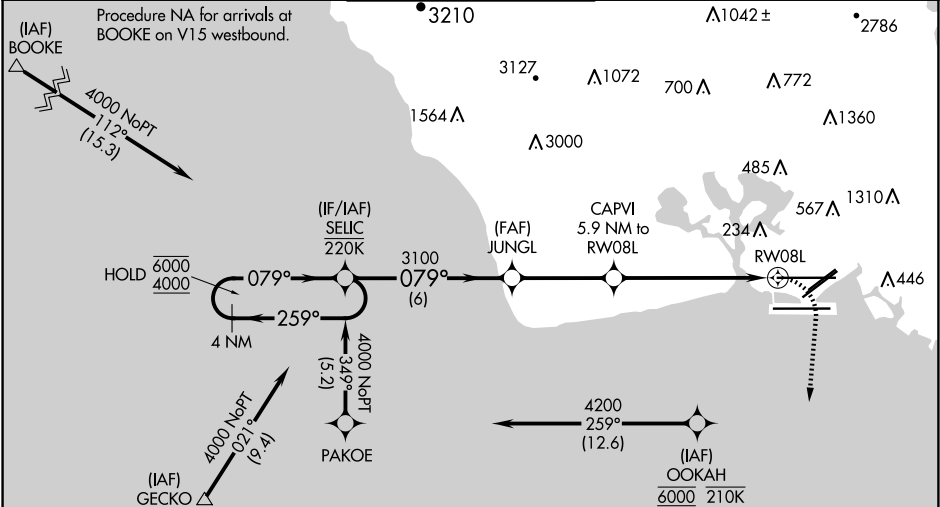


APP CRS	Rwy Ldg	12312
079°	TDZE	13
	Apt Elev	13

RNAV (GPS) Y RWY 8L

DANIEL K INOUEY INTL (HNL) (PHNL)

RNP APCH - GPS.		MALSR	MISSED APPROACH: Climbing right turn to 3600 direct ALANA and hold, continue climb-in-hold to 3600.	
Circling Rwy 22R NA at night. For inop ALS, increase Cats C, D, and E visibility to 1½ SM. Circling NA to sea lanes 4W, 8W, 22W, and 26W. Circling NA for Cats A and B northwest of Rwy 8L-22R. Circling NA for Cats C and D north of Rwy 8L-26R. OOKAH transition NA for Cat E aircraft. Cat E restricted to USAF/USN aircraft				
D-ATIS	HCF APPROACH	HONOLULU TOWER	GND CON	CLNC DEL
127.9 251.15	118.3 269.0	118.1 257.8 123.9 273.575 (Rwy 8R/26L)	121.9 348.6	121.4 281.4



Procedure NA for arrivals at GECKO on V16 westbound and V4 southwest bound.

ELEV	13	D	TDZE	13
------	----	---	------	----

