

APP CRS 259°	Rwy Ldg 12000 TDZE 10 Apt Elev 13
------------------------	--

RNAV (RNP) RWY 26L
DANIEL K INOUE INTL (HNL) (PHNL)

RNP AR APCH, RF required.

T For uncompensated Baro-VNAV systems, procedure NA
A NA below 15°C (58°F) or above 53°C (128°F).

MALSF

MISSED APPROACH: Climb to 3000 on track 259° to KABTE, left turn to LAYIG, then track 133° to ALANA and hold. Missed approach requires minimum climb of 234 feet per NM to 300.

D-ATIS

127.9 251.15

HCF APPROACH

118.3 269.0

HONOLULU TOWER

118.1 257.8

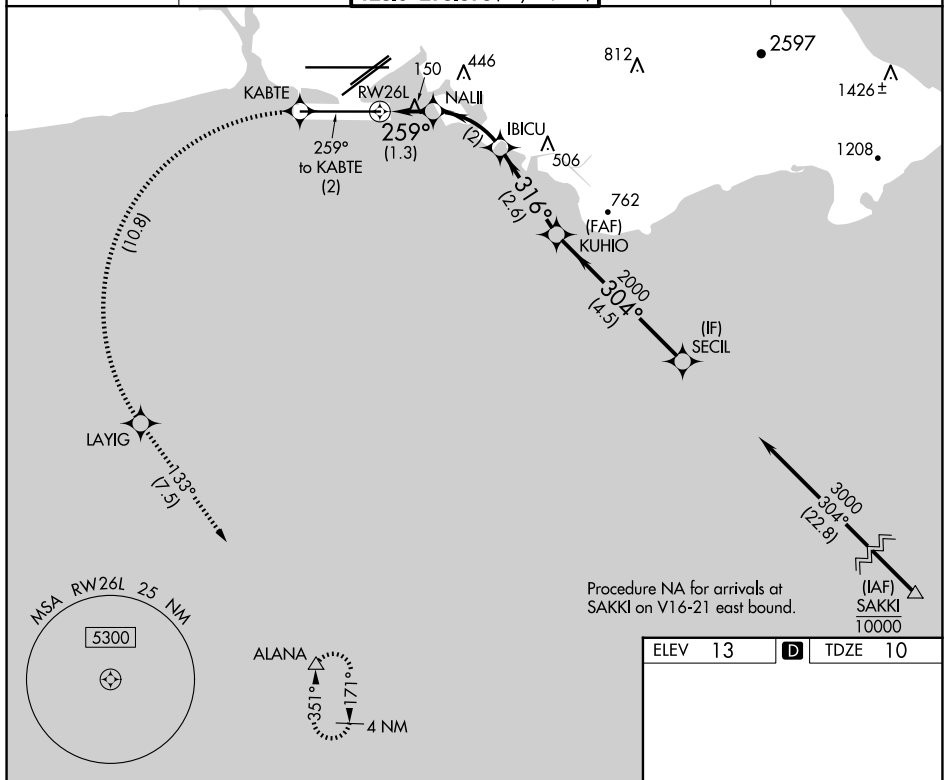
123.9 273.575 (Rwy 8R/26L)

GND CON

121.9 348.6

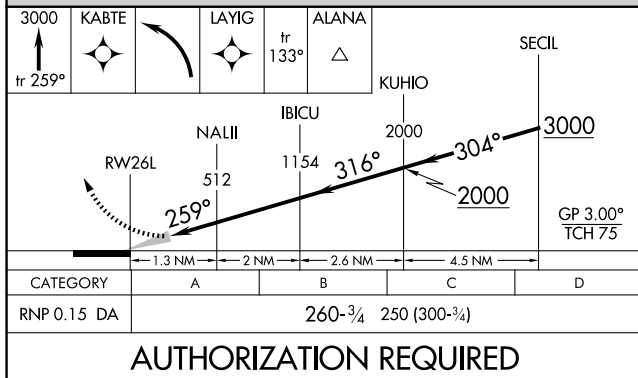
CLNC DE

121.4 281.4



Procedure NA for arrivals at
SAKKI on V16-21 east bound.

ELEV	13	D	TDZE	10
------	----	----------	------	----



MIRL Rwy 4L-22R
REIL Rwys 4L, 8R, 22L, 22R, and 26R
HIRL Rwys 4R-22L, 8L-26R, and 8R-26L

HONOLULU, HAWAII
Orig-E 28FEB19

21°19'N-157°55'W

DANIEL K INOUE INTL (HNL) (PHNL)
RNAV (RNP) RWY 26L