

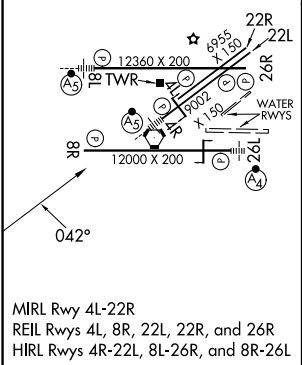
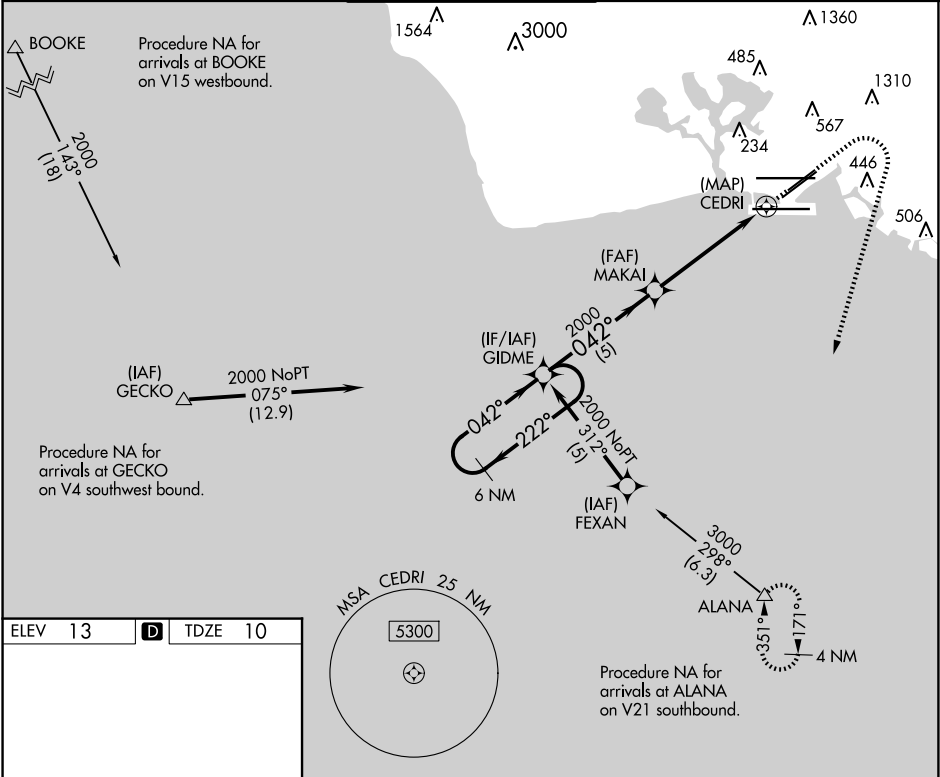
APP CRS	Rwy Ldg	6952
042°	TDZE	10
	Apt Elev	13

RNAV (GPS) RWY 4L

DANIEL K INOUEY INTL (HNL) (PHNL)

RNP APCH	HONOLULU TOWER 118.1 257.8 123.9 273.575 (Rwy 8R/26L)				GND CON 121.9 348.6	CLNC DEL 121.4 281.4
<div><div></div><div></div></div>	Circling Rwy 22R NA at night. Circling NA for Cats A and B northwest of Rwys 8L and 22R. Circling NA for Cats C, D, and E north of Rwy 8L-26R. Circling NA to Sea Lanes 4W, 8W, 22W, and 26W. Rwy 4L helicopter visibility reduction below ¾ SM NA.				MISSED APPROACH: Climb to 500 then climbing right turn to 3000 direct ALANA and hold.	

D-ATIS 127.9 251.15	HCF APPROACH 118.3 269.0	HONOLULU TOWER 118.1 257.8 123.9 273.575 (Rwy 8R/26L)	GND CON 121.9 348.6	CLNC DEL 121.4 281.4
------------------------	-----------------------------	---	------------------------	-------------------------



6 NM Holding Pattern		GIDME	MAKAI	500	3000	ALANA
2000 ← 222° 042° →		042°	2000	3.04° TCH 50		
		5 NM	5 NM	1 NM		
CATEGORY	A	B	C	D	E	
LNAV MDA	460-1¼	450 (500-1¼)	460-1⅜ 450 (500-1⅜)	460-1½ 450 (500-1½)	980-3 970 (1000-3)	
<div></div> CIRCLING	680-1¼	667 (700-1¼)	820-2¼ 807 (900-2¼)	1400-3 1387 (1400-3)	1940-3 1927 (2000-3)	

PAC, 12 JUN 2025 to 07 AUG 2025

PAC, 12 JUN 2025 to 07 AUG 2025