

LOC/DME I-EP 109.1 Chan 28	APP CRS 304°	Rwy Ldg 12000 TDZE 10 Apt Elev 13
--	------------------------	--

LDA RWY 26L

DANIEL K INOUE INTL (HNL) (PHNL)

DME required. From CUDEK, NBODY, SHLAE: RNAV 1-GPS required.

▼ Circling Rwy 22R NA at night. Circling NA to sea lanes 4W, 8W, 22W, and 26W. NBODY transition, CUDEK transition, SHLAE transition NA for Cat E aircraft. Follow flasher lights to Rwy 26L. Procedure NA when ALS or SFL open. Circling Cat E NA. Circling NA for Cats A and B northwest of Rwy 8L-22R. Circling NA for Cats C and D north of Rwy 8L-26R.

MALSF

MISSED APPROACH: Climb to 600 then climbing left turn to 3000 on HNL VORTAC R-171 to ALANA INT/ HNL 13.9 DME and hold.

D-ATIS 127.9 251.15	HCF APPROACH 118.3 269.0	HONOLULU TOWER 118.1 257.8 123.9 273.575 (Rwy 8R/26L)	GND CON 121.9 348.6	CLNC DEL 121.4 281.4
-------------------------------	------------------------------------	---	-------------------------------	--------------------------------

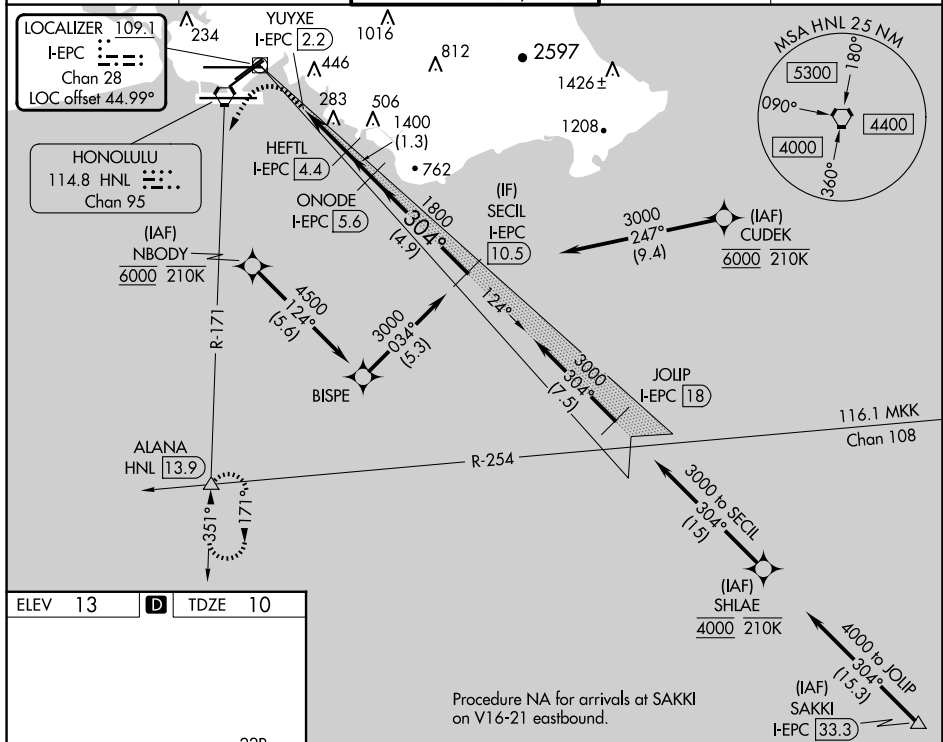


Figure 10-1 is a sample I-ECM chart. It shows a flight path starting from a 600-foot altitude, descending to 3000 feet, and then following a 304-degree heading. Key points include YUYXE (I-EPIC 2.2), HEFTL (I-EPIC 4.4), ONODE (I-EPIC 5.6), and SECIL (I-EPIC 10.5). The chart also shows a 304-degree heading and a 304-degree heading. The chart is labeled "MIRL Rwy 4L-22R" and "REIL Rwy 4L, 8R, 22L, and 26R". The chart is labeled "HIRL Rwy 4R-22L, 8L-26R, and 8R-26L".

LDA RWY 26L