

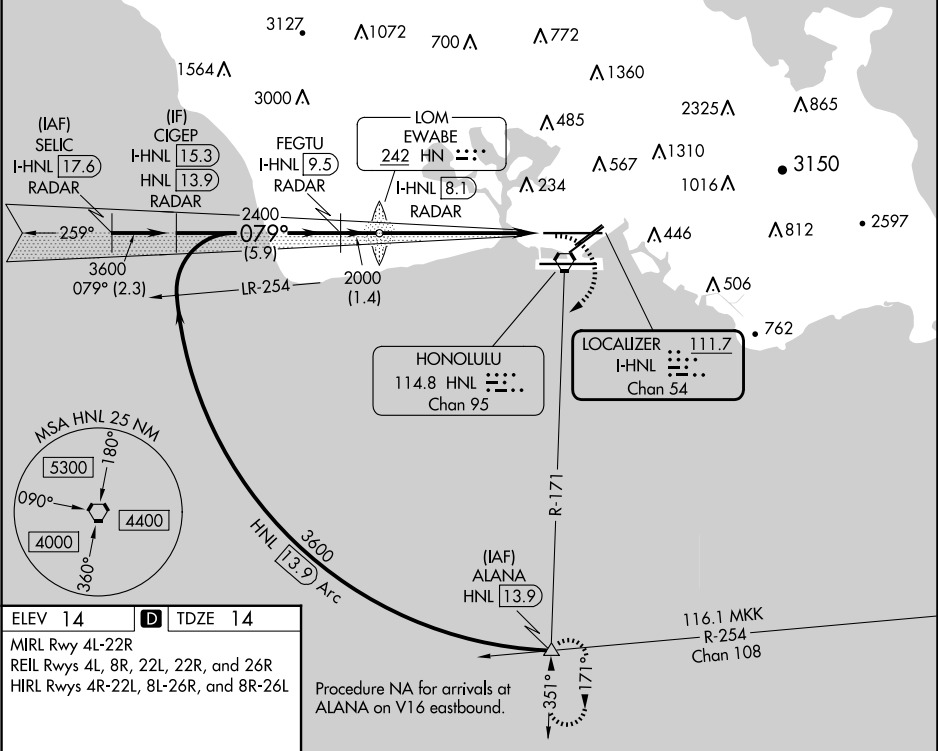
LOC/DME I-HNL	APP CRS	Rwy Ldg	12312
111.7	079°	TDZE	14
Chan 54		Apt Elev	14

LOC RWY 8L

DANIEL K INOUE INTL (HNL) (PHNL)

DME or RADAR required.		MALSR	MISSED APPROACH: Climbing right turn to 5000 on heading 200° and HNL VORTAC R-171 to ALANA INT/HNL 13.9 DME and hold, continue climb-in-hold to 5000.
<div><div></div><div></div></div> <div>Circling Rwy 22R NA at night. Circling NA for Cats A and B northwest of Rwys 8L and 22R and for Cats C and D north of Rwy 8L-26R. Circling NA to sea lanes 4W, 8W, 22W and 26W. For inop ALS, increase S-LOC 8L Cats C and D visibility to 1½ SM.</div>		<div><div></div><div></div></div>	

D-ATIS	HCF APPROACH	HONOLULU TOWER	GND CON	CLNC DEL
127.9 251.15	118.3 269.0	118.1 257.8 123.9 273.575 (Rwy 8R/26L)	121.9 348.6	121.4 281.4



CIGEP I-HNL [15.3] RADAR		VGSi and descent angles not coincident (VGSi Angle 3.00/TCH 73).		5000	HNL R-171	ALANA
FEGTU I-HNL [9.5] RADAR		EWABE LOM I-HNL [8.1] RADAR		hdg 200°		
3600 079° 2400 2000		3.08° TCH 56		Use I-HNL DME when on the localizer course.		
5.9 NM		1.4 NM		I-HNL [3.4] I-HNL [2.2]		
4.7 NM		1.2 NM				
CATEGORY	A	B	C	D		
S-8L	480-½	466 (500-½)	480-1	466 (500-1)		
<div><div></div></div> CIRCLING	680-1	666 (700-1)	820-2¼ 806 (900-2¼)	1280-3 1266 (1300-3)		