

DEPARTURE ROUTE DESCRIPTION

Turn right/left to heading assigned by the Tower, expect vectors to KEOLA, maintain 5000; then on transition. Expect clearance to enroute altitude/flight level at KEOLA.

KATHS TRANSITION (KEOLA3.KATHS): From over KEOLA on HNL R-258 and SOK R-234 to KATHS.

LIHUE TRANSITION (KEOLA3.LIH): From over KEOLA on SOK R-111 and LH R-148 to LH VORTAC.

LIJIA TRANSITION (KEOLA3.LIJIA): From over KEOLA on track 282° to LIJIA.

NONNI TRANSITION (KEOLA3.NONNI): From over KEOLA on HNL R-258 to NONNI.

PUPPI TRANSITION (KEOLA3.PUPPI): From over KEOLA on track 271° to PUPPI.

SOUTH KAUAI TRANSITION (KEOLA3.SOK): From over KEOLA on SOK R-111 to SOK VORTAC.

KEOLA THREE DEPARTURE

HCF APPROACH
118.3 269.0
D-ATIS
127.9 251.15
CUNC DEL
121.4 281.4
GND CON
121.9 348.6
HONOLULU TOWER
118.1 257.8
123.9 273.575 (Rwy 8R/24L)

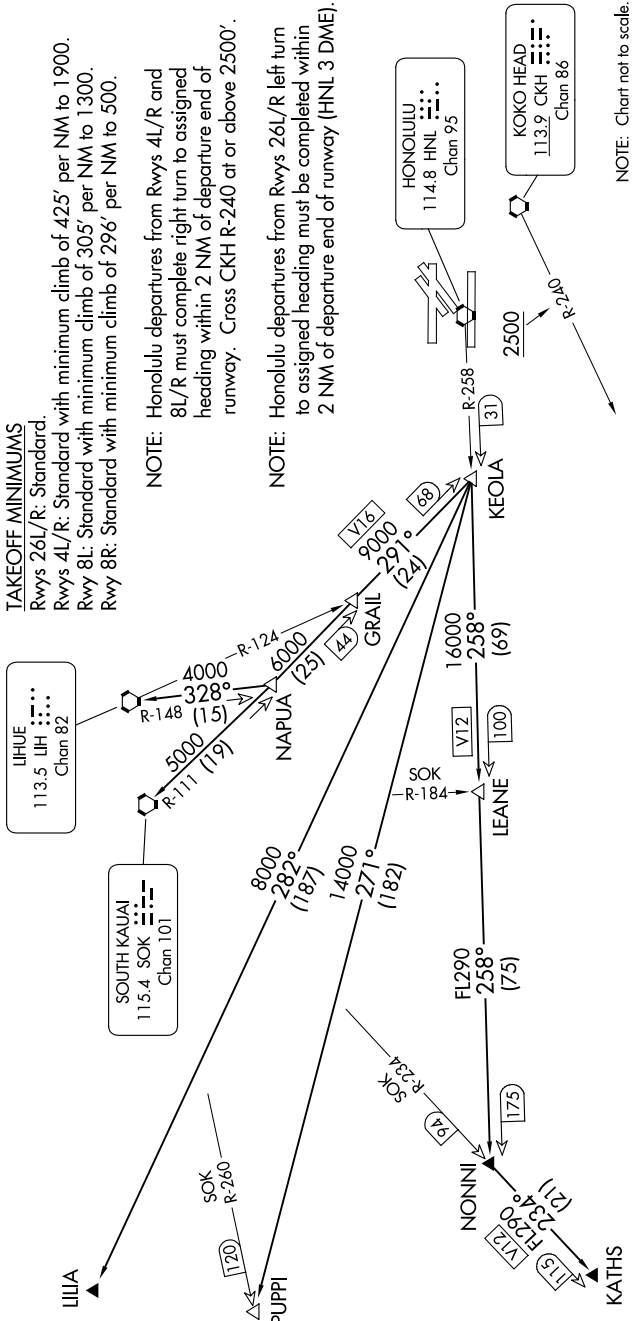


TAKEOFF MINIMUMS

Rwys 26L/R: Standard.
Rwys 4L/R: Standard with minimum climb of 425' per NM to 1900.
Rwy 8L: Standard with minimum climb of 305' per NM to 1300.
Rwy 8R: Standard with minimum climb of 296' per NM to 500.

NOTE: Honolulu departures from Rwy 4L/R and 8L/R must complete right turn to assigned heading within 2 NM of departure end of runway. Cross CKH R-240 at or above 2500'.

NOTE: Honolulu departures from Rwy 26L/R left turn to assigned heading must be completed within 2 NM of departure end of runway (HNL 3 DME).



NOTE: Chart not to scale.

KEOLA THREE DEPARTURE

(KEOLA3.KEOLA) 25FEB21