

LOC/DME H-IUM
110.5
Chan **42**

APP CRS
042°

Rwy Ldg
TDZE
Apt Elev
8950
8
13

ILS Y RWY 4R

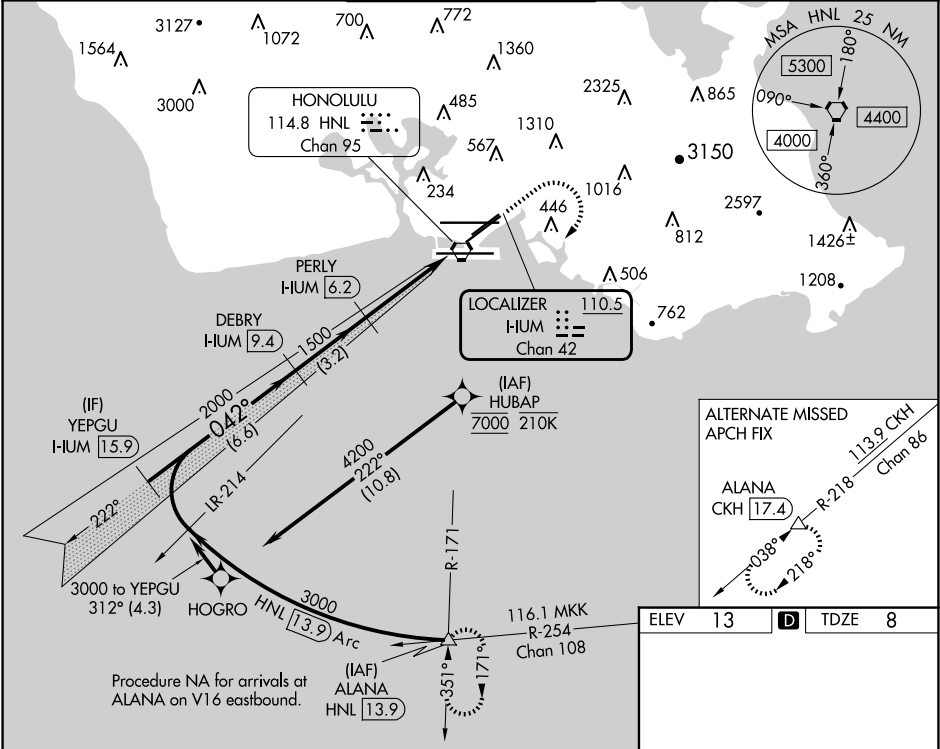
DANIEL K INOUEY INTL (HNL) (PHNL)

DME required. From HUBAP: RNAV 1-GPS required.
DME or RADAR required for procedure entry.

MALSRL

MISSED APPROACH: Climb to 540 then climbing right turn to 3000 on heading 220° and on HNL VORTAC R-171 to ALANA INT/HNL 13.9 DME and hold. *Missed approach requires minimum climb of 318 feet per NM to 1820. (If unable to meet climb gradient use S-ILS 4R minimums).

D-ATIS 127.9 251.15	HCF APPROACH 118.3 269.0	HONOLULU TOWER 118.1 257.8 123.9 273.575 (Rwy 8R/26L)	GND CON 121.9 348.6	CLNC DEL 121.4 281.4
-------------------------------	------------------------------------	---	-------------------------------	--------------------------------



VGSI and ILS glidepath not coincident (VGSI Angle 3.00/TCH 71).

540 3000 HNL ALANA

↑ hdg 220° R-171 △

YEPGU H-IUM 15.9

DEBRY H-IUM 9.4

PERLY H-IUM 6.2

3000 2000 1500

GS 3.00° TCH 55

6.6 NM 3.2 NM 4.5 NM

CATEGORY	A	B	C	D
S-ILS 4R*		258-1/2 250 (300-1/2)		
S-ILS 4R		308-1/2 299 (300-1/2)		

MIRL Rwy 4L-22R

REIL Rwys 4L, 8R, 22L, 22R, and 26R

HIRL Rwys 4R-22L, 8L-26R, and 8R-26L