

APP CRS  
279°

Rwy Idg  
TDZE  
Apt Elev

3148  
626  
626

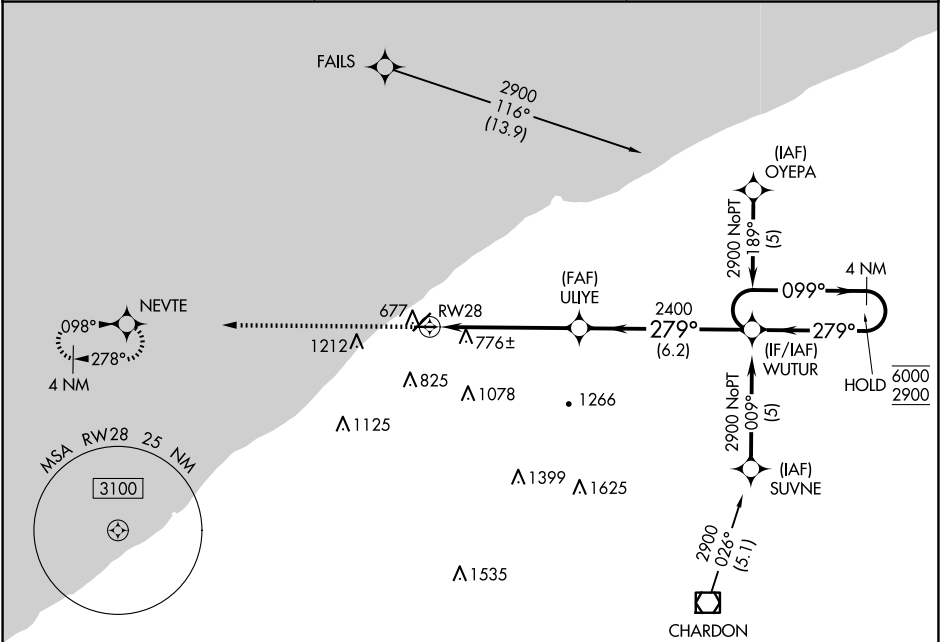
RNAV (GPS) RWY 28  
LAKE COUNTY EXEC (LNN)

RNP APCH - GPS.

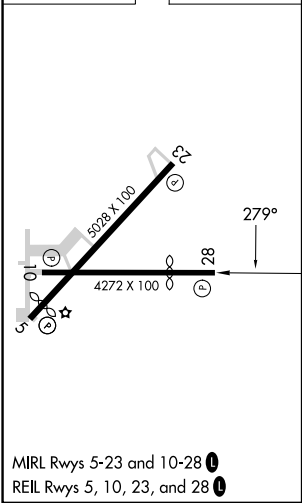
MISSED APPROACH: Climb to 2300 direct NEVTE and hold.

Rwy 28 helicopter visibility reduction below ¾ SM NA.

AWOS-3PT 119.225	CLEVELAND APP CON 125.35 346.325	UNICOM 122.725 (CTAF) 0
---------------------	-------------------------------------	----------------------------



ELEV 626	TDZE 626
----------	----------



2300	NEVTE	VGSI and descent angles not coincident (VGSI Angle 3.50/TCH 26).			
		WUTUR 4 NM Holding Pattern			
		ULIYE 2400			
		RWY28 1.6 NM to RWY28			
		1.6 NM 3.8 NM 6.2 NM			
CATEGORY	A	B	C	D	
LNAV MDA	1260-1	634 (700-1)	1260-1¾ 634 (700-1¾)	NA	
CIRCLING	1260-1	634 (700-1)	1520-2¾ 894 (900-2¾)	NA	