

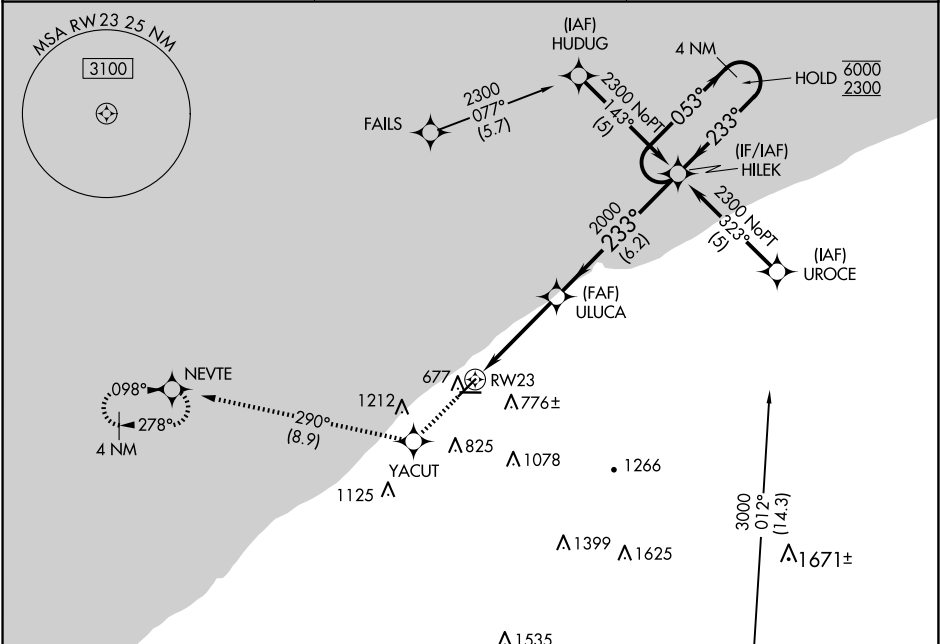
WAAS CH <b>82410</b> <b>W23A</b>	APP CRS <b>233°</b>	Rwy Idg TDZE Apt Elev	<b>5028</b> <b>623</b> <b>626</b>
----------------------------------------	------------------------	-----------------------------	-----------------------------------------

RNAV (GPS) RWY 23

LAKE COUNTY EXEC (LNN)

RNP APCH - GPS.	MISSED APPROACH: Climb to 2300 direct YACUT and on track 290° to NEVTE and hold.
▼ Rwy 23 helicopter visibility reduction below ¾ SM NA. For uncompensated Baro-VNAV systems, LNAV/VNAV NA below -16°C or above 54°C.	

AWOS-3PT <b>119.225</b>	CLEVELAND APP CON <b>125.35 346.325</b>	UNICOM <b>122.725 (CTAF) 0</b>
----------------------------	--------------------------------------------	-----------------------------------



ELEV 626	TDZE 623
----------	----------

5028 X 100  
4272 X 100  
28

2300	YACUT	tr 290°	NEVTE	VGSI and RNAV glidepath not coincident (VGSI Angle 4.00/TCH 54).	4 NM Holding Pattern
*LNAV only.				ULUCA 2000	HILEK 053° 6000 2300 233° 2000
					GP 3.00° TCH 40

1.2 NM 3 NM 6.2 NM

CATEGORY	A	B	C	D
LPV DA	1031-1½	408 (500-1½)		NA
LNAV/VNAV DA	1142-1¾	519 (600-1¾)		NA
LNAV MDA	1200-1	577 (600-1)	1200-1½ 577 (600-1½)	NA
CIRCLING	1200-1	574 (600-1)	1520-2¾ 894 (900-2¾)	NA