

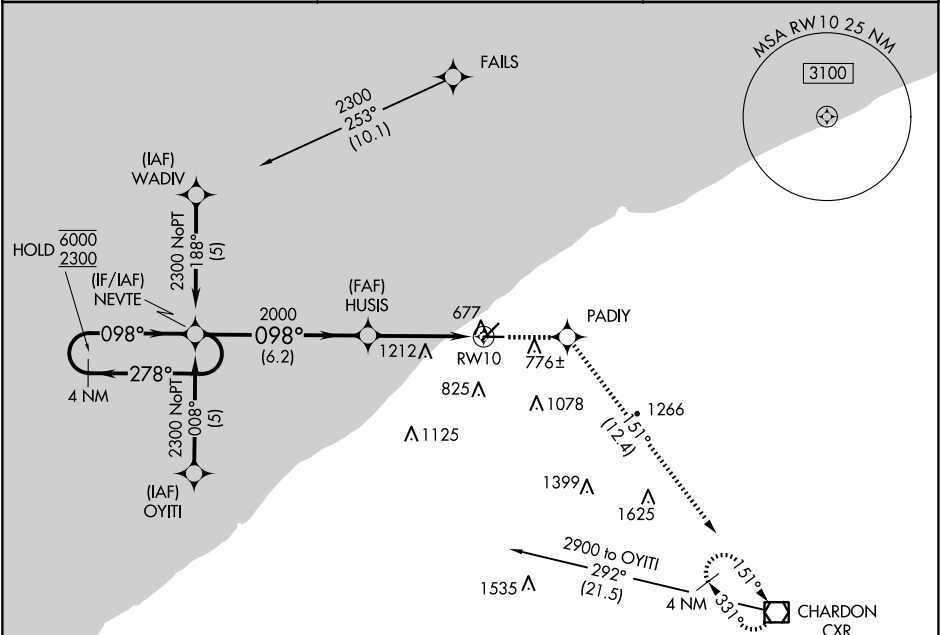
APP CRS	Rwy Idg	4272
098°	TDZE	625
	Apt Elev	626

RNAV (GPS) RWY 10

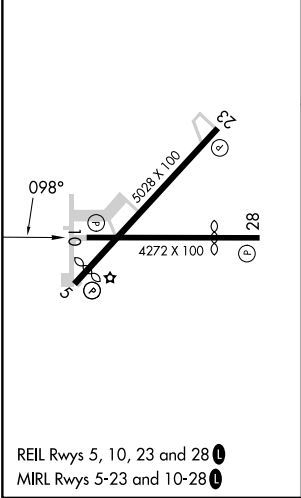
LAKE COUNTY EXEC (LNN)

RNP APCH.	MISSED APPROACH: Climb to 2900 direct PADIY and on track 151° to CXR VOR/DME and hold.
▼ ▲ Rwy 10 helicopter visibility reduction below ¾ SM NA.	

AWOS-3PT 119.225	CLEVELAND APP CON 125.35 346.325	UNICOM 122.725 (CTAF) 0
---------------------	-------------------------------------	----------------------------



ELEV 626	TDZE 625
----------	----------



VGSI and descent angles not coincident (VGSI Angle 3.50/TCH 47).			
4 NM Holding Pattern	NEVTE	HUSIS	PADIY
6000 2300	278° 098°	098°	151°
2000			
6.2 NM			
1.8 NM			
2.4 NM			
CATEGORY	A	B	C
LNAV MDA	1560-1¼ 935 (1000-1¼)	1560-2¾ 935 (1000-2¾)	1560-2¾ 934 (1000-2¾)
CIRCLING	1560-1¼ 934 (1000-1¼)	1560-2¾ 934 (1000-2¾)	1560-2¾ 934 (1000-2¾)