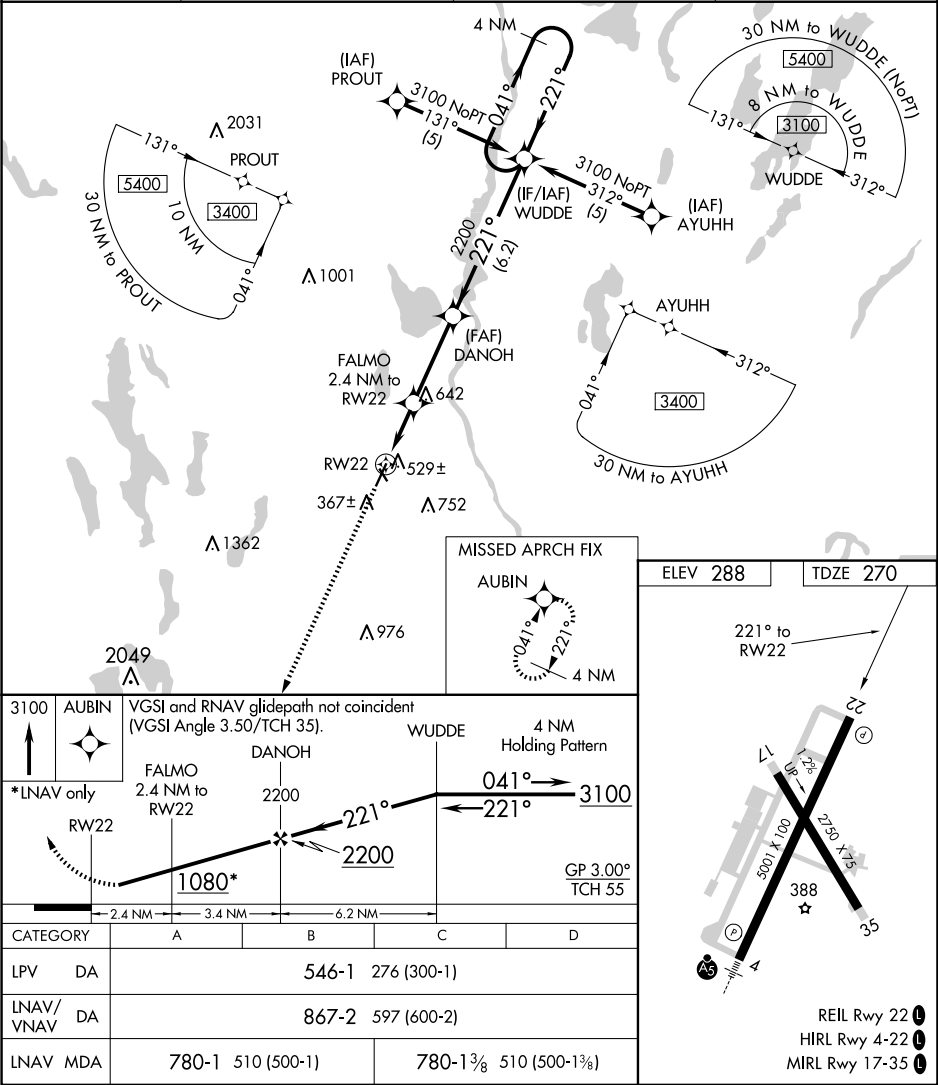


WAAS CH 78019 W22A	APP CRS 221°	Rwy Idg TDZE 270 Apt Elev 288	5001
--	------------------------	---	-------------

RNAV (GPS) RWY 22

AUBURN/LEWISTON MUNI (LEW)

RNP APCH. <div><div>▼</div><div>⚠</div></div> <div>Procedure NA at night. For uncompensated Baro-VNAV systems, LNAV/VNAV NA below -15°C or above 48°C. Rwy 22 helicopter visibility reduction below 1 SM NA. When local altimeter setting not received, use Augusta altimeter setting: increase LPV all Cats DA to 617 feet and all Cats visibility ½ SM; LNAV/VNAV all Cats DA to 938 feet and all Cats visibility ½ SM; increase all MDA 80 feet and LNAV Cat C/D visibility ½ SM. Baro-VNAV NA when using Augusta altimeter setting.</div>		MISSED APPROACH: Climb to 3100 direct AUBIN and hold.	
AWOS-3PT 118.025	PORTLAND APP CON ★ 125.5 353.9	CLNC DEL 124.05	UNICOM 122.8 (CTAF) 0



NE-1, 10 JUL 2025 to 07 AUG 2025

NE-1, 10 JUL 2025 to 07 AUG 2025