

WAAS CH 82129 W16A	APP CRS 162°	Rwy Idg TDZE 176 Apt Elev 177	5000
--	------------------------	---	-------------

RNAV (GPS) RWY 16

CHEHALIS-CENTRALIA (CLS)

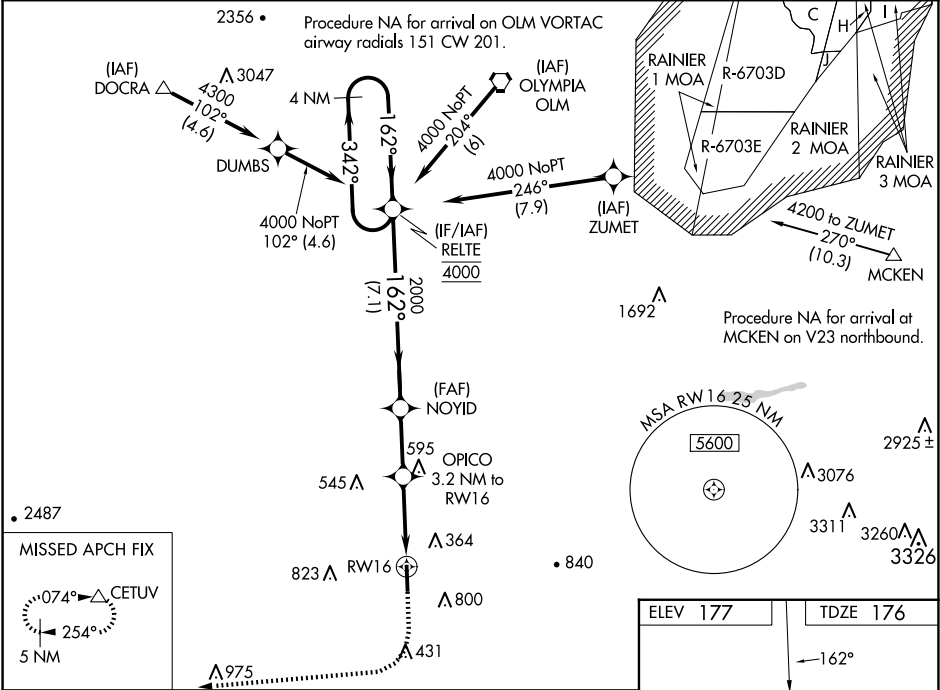
⚠

For uncompensated Baro-VNAV systems, LNAV/VNAV NA below -1.5°C (5°F) or above 54°C (130°F). Circling NA northeast of Rwy 16-34. DME/DME RNP-0.3 NA. Baro-VNAV and VDP NA when using Olympia altimeter setting. When local altimeter setting not received, use Olympia altimeter setting: increase LPV DA to 522 feet, LNAV/VNAV DA to 878 feet and all MDA 60 feet; increase LPV all Cats visibility ¼ SM, LNAV Cat B ¼ SM, LNAV Cats C/D ½ SM and Circling Cat B ¼ SM. Rwy 16 helicopter visibility reduction below ¾ SM NA.

MISSED APPROACH:

Climb to 900 then climbing right turn to 5000 direct CETUV and hold, continue climb-in-hold to 5000.

AWOS-3 118.025	SEATTLE APP CON 121.1 377.15	UNICOM 122.8 (CTAF) 0
--------------------------	--	---------------------------------



4 NM Holding Pattern		RELTE	NOYD	OPICO 3.2 NM to RW16	900	5000	CETUV
4000 ← 342°		162° → 4000	2000	*1220	*2.2 NM to RW16	RW16	*LNAV only
GP 3.00° TCH 35		7.1 NM	2.4 NM	1 NM	2.2 NM		
CATEGORY	A	B	C	D			
LPV DA	476-1 300 (300-1)						
LNAV/ VNAV DA	832-2½ 656 (700-2½)						
LNAV MDA	900-1 724 (800-1)		900-2 724 (800-2)				
CIRCLING	900-1 723 (800-1)	1080-1¼ 903 (1000-1¼)	1200-3 1023 (1100-3)	1300-3 1123 (1200-3)			

