

WAAS CH 78323 W30A	APP CRS 306°	Rwy Idg TDZE 591 Apt Elev 597
--	------------------------	---

RNAV (GPS) Y RWY 30


GARY/CHICAGO INTL (GYY)

RNP APCH - GPS.

▼
⚠

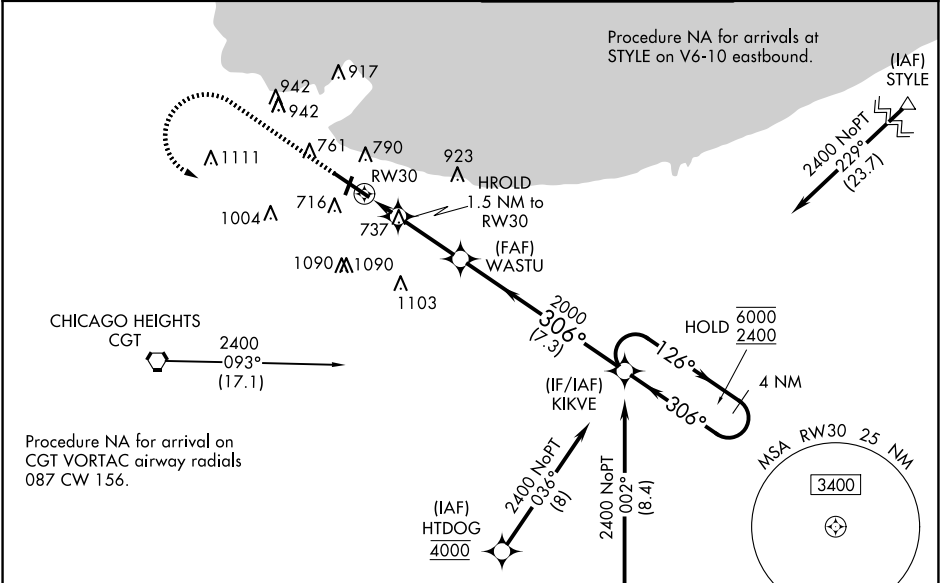
For uncompensated Baro-VNAV systems, LNAV/VNAV NA below -16°C or above 54°C. For inop ALS, increase LNAV Cat C and D visibility to RVR 6000.
** RVR 1800 authorized with use of FD or AP or HUD to DA (NA when using Chicago Midway Intl altimeter setting).

MALSR

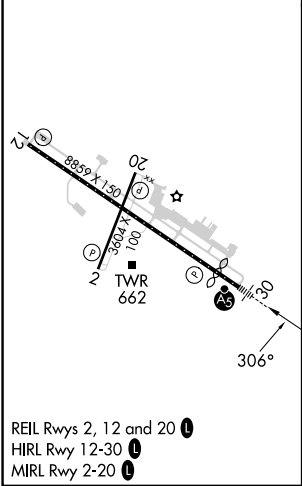





MISSED APPROACH:
Climb to 1100 then climbing left turn to 2400 direct KIKVE and hold.

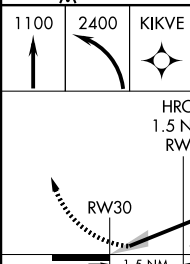
ATIS 134.575	CHICAGO APP CON 133.1 285.6	GARY TOWER ★ 125.6 (CTAF) 	GND CON 121.9
------------------------	---------------------------------------	---	-------------------------



ELEV 597		TDZE 591
----------	---	----------



REIL Rwy 2, 12 and 20 
HIRL Rwy 12-30 
MIRL Rwy 2-20 



1100 2400 KIKVE


WASTU 2000

HOLD 1.5 NM to RW30

1120 2000

1.5 NM 2.8 NM 7.3 NM

GP 3.00 TCH 57

CATEGORY	A	B	C	D
LPV DA**	791/24		200 (200-½)	
LNAV/VNAV DA	991/35		400 (400-¾)	
LNAV MDA	1000/24 409 (500-½)		1000/40	409 (500-¾)
 CIRCLING	1160-1 563 (600-1)	1180-1 583 (600-1)	1400-2¼ 803 (900-2¼)	1420-2¾ 823 (900-2¾)