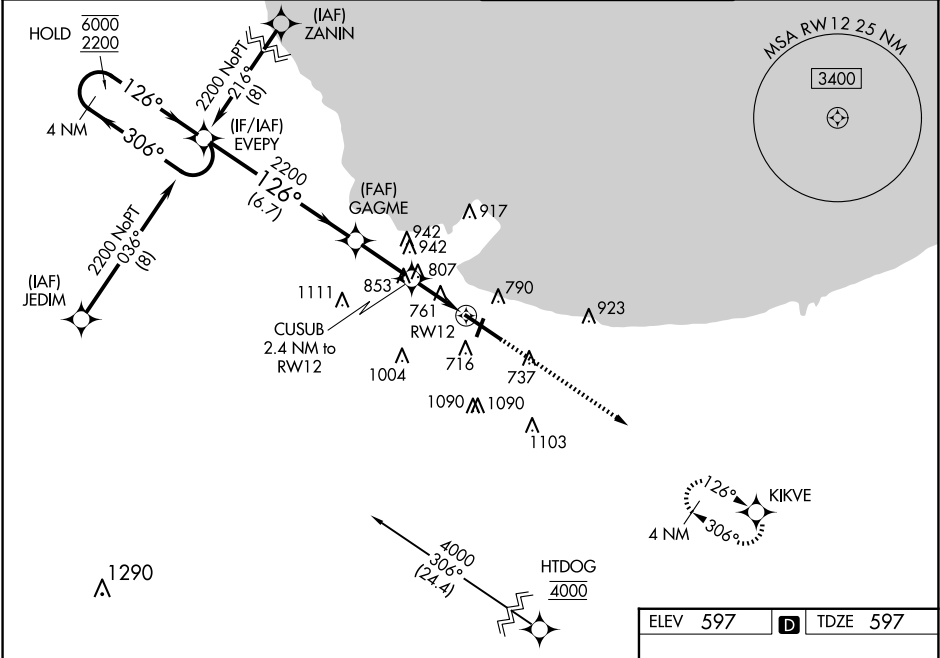


WAAS CH <b>70623</b> <b>W12A</b>	APP CRS <b>126°</b>	Rwy Idg <b>7959</b> TDZE <b>597</b> Apt Elev <b>597</b>
--	------------------------	---

RNAV (GPS) Y RWY 12  
GARY/CHICAGO INTL (GYY)

RNP APCH - GPS.	<div><div>▼</div><div>▲</div></div> For uncompensated Baro-VNAV systems, LNAV/VNAV NA below -16°C or above 54°C. Rwy 12 helicopter visibility reduction below ¾ SM NA.	MISSED APPROACH: Climb to 2400 direct KIKVE and hold.
-----------------	--	---

ATIS <b>134.575</b>	CHICAGO APP CON <b>133.1 285.6</b>	GARY TOWER ★ <b>125.6 (CTAF) 0</b>	GND CON <b>121.9</b>
------------------------	---------------------------------------	---------------------------------------	-------------------------



<div>4 NM Holding Pattern</div> <div><div>6000 2200</div><div>GP 3.00° TCH 50</div></div> <div><div>EVEPY</div><div>GAGME</div><div>CUSUB 2.4 NM to RW12</div></div> <div><div>2200</div><div>1400</div><div>RW12</div></div> <div><div>6.7 NM</div><div>2.5 NM</div><div>1.1</div><div>1.3 NM</div></div>				
CATEGORY	A	B	C	D
LPV DA	797-3⁄4 200 (200-3⁄4)			
LNAV/VNAV DA	1049-13⁄8 452 (500-13⁄8)			
LNAV MDA	1060-1	463 (500-1)	1060-13⁄8	463 (500-13⁄8)
CIRCLING	1160-1 563 (600-1)	1180-1 583 (600-1)	1400-21⁄4 803 (900-21⁄4)	1420-23⁄4 823 (900-23⁄4)

ELEV 597 D TDZE 597

2400

KIKVE

126°

885° X 130

360° X 100

2 TWR 662

AS 130

REIL Rwy 2, 12 and 20  
HIRL Rwy 12-30  
MIRL Rwy 2-20

EC-2, 10 JUL 2025 to 07 AUG 2025

EC-2, 10 JUL 2025 to 07 AUG 2025