

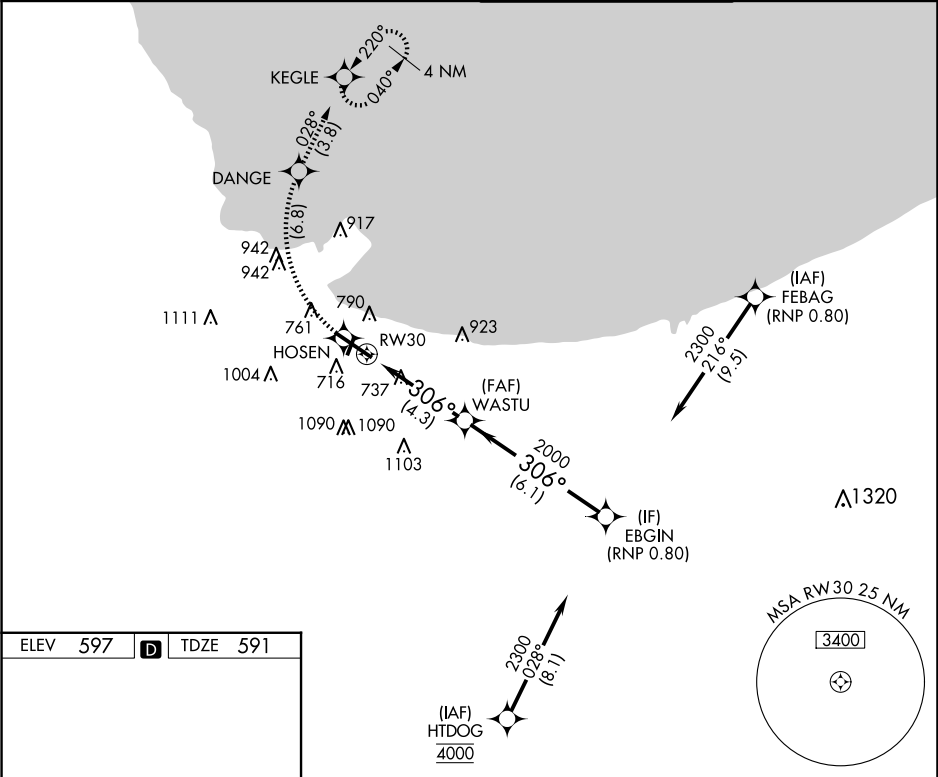
APP CRS	Rwy Idg	7959
306°	TDZE	591
	Apt Elev	597

RNAV (RNP) Z RWY 30

GARY/CHICAGO INTL (GYY)

RNP AR APCH - GPS.	MALSR	MISSED APPROACH: Climb to 2100 on track 306° to HOSEN, right turn to DANGE, then track 028° to KEGLE and hold.
▼ For uncompensated Baro-VNAV systems, procedure NA below -16°C or above 54°C. Missed approach requires RNP less than 1.0. For inop ALS, increase RNP 0.30 all Cats visibility to 1½ SM.	AS	

ATIS 134.575	CHICAGO APP CON 133.1 285.6	GARY TOWER ★ 125.6 (CTAF) 0	GND CON 121.9
-----------------	--------------------------------	--------------------------------	------------------



ELEV 597	D	TDZE 591
----------	---	----------

REIL Rwy 2, 12 and 20  
HIRL Rwy 12-30  
MIRL Rwy 2-20

2100	HOSEN	DANGE	KEGLE
tr 306°			tr 028°

WASTU 2000, RW30, KEGLE 2300, GP 3.00° TCH 57

CATEGORY	A	B	C	D
RNP 0.13 DA	976/35 385 (400-%)			
RNP 0.30 DA	1098/55 507 (600-1)			

AUTHORIZATION REQUIRED