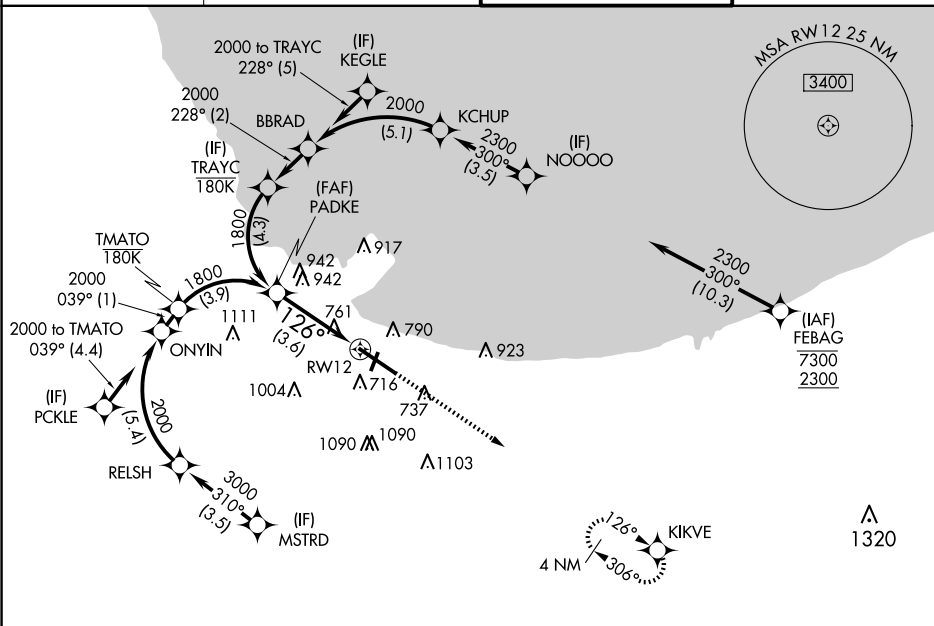


RNAV (RNP) Z RWY 12  
GARY/CHICAGO INTL (GYY)

**T** For uncompensated Baro-VNAV systems, procedure NA below -16°C or above 54°C.

MISSED APPROACH: Climb to 2400  
direct KIKVE and hold.

GND CON  
121.9



REIL Rwy 2, 12 and 20 **L**  
HIRL Rwy 12-30 **L**  
MIRL Rwy 2-20 **L**

GARY/CHICAGO, INDIANA  
Amdt 2A 05SEP24

41°37'N-87°25'W

GARY/CHICAGO INTL (GYY)  
RNAV (RNP) Z RWY 12

CATEGORY	A	B	C	D
RNP 0.10 DA		913-7/8	316 (400-7/8)	
RNP 0.30 DA		1043-1 3/8	446 (500-1 3/8)	