

APP CRS
203°

Rwy Ldg
TDZE
Apt Elev

3604
591
597

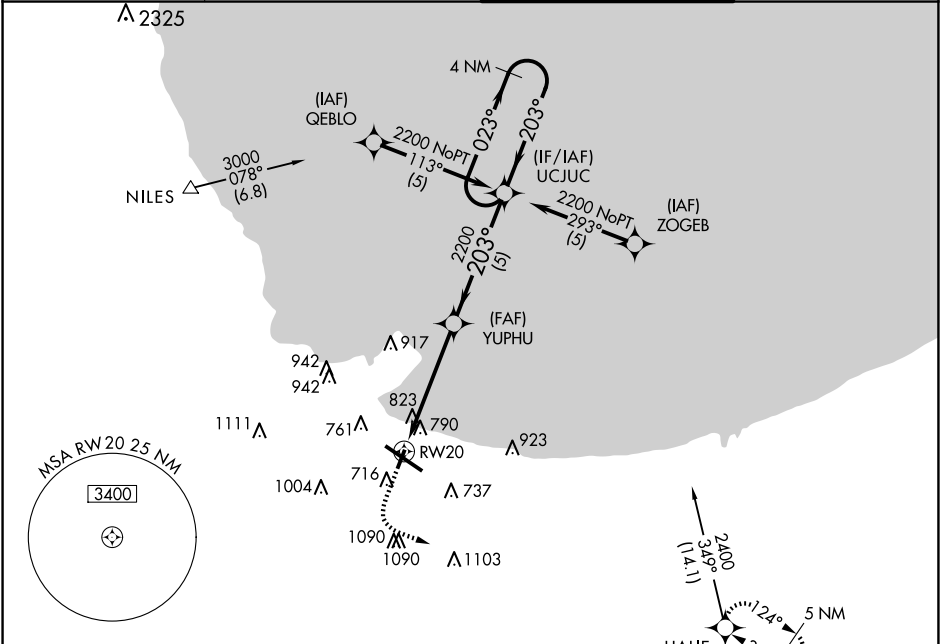
RNAV (GPS) RWY 20

GARY/CHICAGO INTL (GYY)

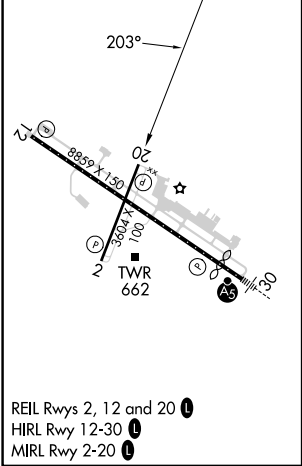
GPS or RNP-0.3 required.
DME/DME RNP-0.3 NA.

MISSED APPROACH: Climb to 1500 then climbing left turn to 2400 direct HALIE WP and hold.

ATIS 134.575	CHICAGO APP CON 133.1 285.6	GARY TOWER ★ 125.6 (CTAF) 0	GND CON 121.9
-----------------	--------------------------------	--------------------------------	------------------



ELEV 597	D	TDZE 591
----------	---	----------



1500	2400	HALIE	VGSI and descent angles not coincident (VGSI Angle 3.00/TCH 42).	
YUPHU		UCJUC	4 NM Holding Pattern	
RW20		2200	023° → 2200 ← 203°	
4.9 NM		5 NM		
CATEGORY	A	B	C	D
GLS PA DA	NA			
LNAV/VNAV DA	NA			
LNAV MDA	1080-1 489 (500-1)		1080-1¼ 489 (500-1¼)	1080-1½ 489 (500-1½)
CIRCLING	1140-1 543 (600-1)	1180-1 583 (600-1)	1400-2¼ 803 (900-2¼)	1420-2¾ 823 (900-2¾)