

WAAS CH 69338 W02A	APP CRS 023°	Rwy Idg TDZE Apt Elev	3604 591 597
--	------------------------	-----------------------------	---

RNAV (GPS) RWY 2

GARY/CHICAGO INTL (GYY)

RNP APCH - GPS.

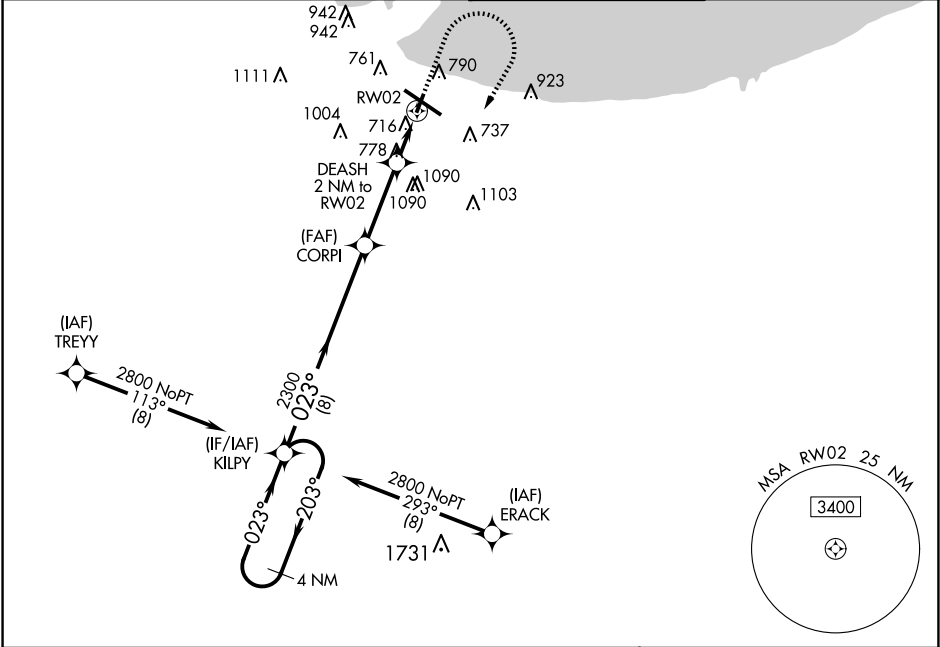
▼

▲

For uncompensated Baro-VNAV systems, LNAV/VNAV NA below -16°C or above 54°C.
Rwy 2 helicopter visibility reduction below ¾ SM NA. When local altimeter setting not received, use Chicago Midway Intl altimeter setting; increase LPV DA to 947 feet and visibility ⅛ SM, LNAV/VNAV DA to 1135 feet and visibility ¼ SM; increase all MDAs 60 feet and Circling Cats C and D visibility ¼ SM. Baro-VNAV NA when using Chicago Midway Intl altimeter setting.

MISSED APPROACH:
Climb to 2000 then climbing right turn to 2800 direct KILPY and hold.

ATIS 134.575	CHICAGO APP CON 133.1 285.6	GARY TOWER ★ 125.6 (CTAF) 0	GND CON 121.9
------------------------	---------------------------------------	---------------------------------------	-------------------------



4 NM Holding Pattern		KILPY		VGSI and RNAV glidepath not coincident (VGSI Angle 3.00/TCH 40).		2000		2800		KILPY		ELEV 597		D		TDZE 591	
2800		←203°		023°→		CORPI		2300		DEASH 2 NM to RW02		*LNAV only					
GP 3.00°		TCH 60		8 NM		3.2 NM		2 NM		RW02							
2300		*1280															
CATEGORY		A		B		C		D									
LPV DA		901-7⁄8		310 (400-%)													
LNAV/VNAV DA		1089-1 3⁄8		498 (500-1 3⁄8)													
LNAV MDA		1040-1 449 (500-1)		1040-1 3⁄8 449 (500-1 3⁄8)													
CIRCLING		1140-1 543 (600-1)		1180-1 583 (600-1)		1400-2 1⁄4 803 (900-2 1⁄4)		1420-2 3⁄4 823 (900-2 3⁄4)									

① MIRL Rwy 2-20

② MIRL Rwy 12-30

③ REIL Rws 2, 12 and 20

EC-2, 10 JUL 2025 to 07 AUG 2025

EC-2, 10 JUL 2025 to 07 AUG 2025