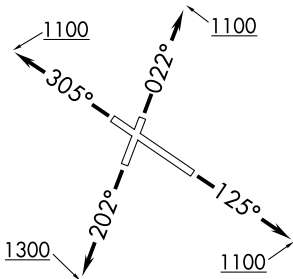


CHICAGO DEP CON
133.1 285.6
ATIS
134.575
GND CON
121.9
GARY TOWER ★
125.6 (CTAF)

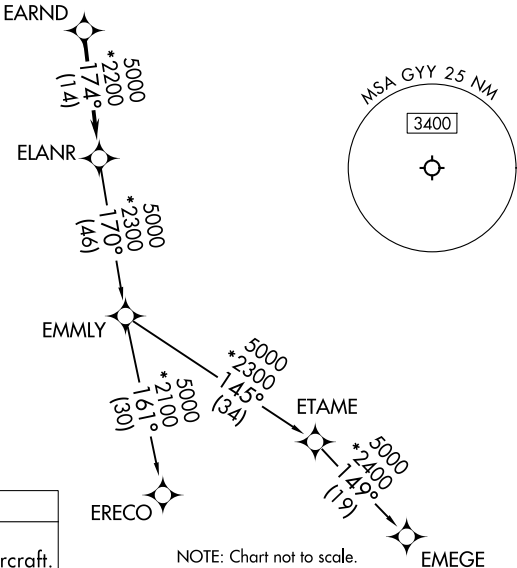
TOP ALTITUDE:
3000



TAKEOFF MINIMUMS:

- Rwy 2: Standard with minimum climb of 323' per NM to 2700.
- Rwy 12: Standard with minimum climb of 330' per NM to 2700.
- Rwy 20: Standard with minimum climb of 350' per NM to 2700.
- Rwy 30: Standard with minimum climb of 320' per NM to 2700.

- NOTE: Turbojet departures maintain 250K until advised by ATC.
- NOTE: EMMLY Transition: For aircraft inbound to Indianapolis Terminal Area, or as assigned by ATC.



RNAV 1 - DME/DME/IRU or GPS.
RADAR required.
RADAR required for non-GPS equipped aircraft.

NOTE: Chart not to scale.

DEPARTURE ROUTE DESCRIPTION

TAKEOFF RUNWAY 2: Climb on heading 022° to 1100, then as assigned by ATC, for vectors to EARND, thence. . . .

TAKEOFF RUNWAY 12: Climb on heading 125° to 1100, then as assigned by ATC, for vectors to EARND, thence. . . .

TAKEOFF RUNWAY 20: Climb on heading 202° to 1300, then as assigned by ATC, for vectors to EARND, thence. . . .

TAKEOFF RUNWAY 30: Climb on heading 305° to 1100, then as assigned by ATC, for vectors to EARND, thence. . . .

. . . .on track 174° to ELANR, then on (transition), maintain 3000.
Expect filed altitude 10 minutes after departure.

EMEGE TRANSITION (ELANR8.EMEGE):

EMMLY TRANSITION (ELANR8.EMMLY):

ERECO TRANSITION (ELANR8.ERECO):