

LOC I-GYY 108.75	APP CRS 306°	Rwy Idg TDZE Apt Elev	7959 591 597
Chan 24 (Y)			

COPTER ILS or LOC RWY 30

GARY/CHICAGO INTL (GYY)

▼

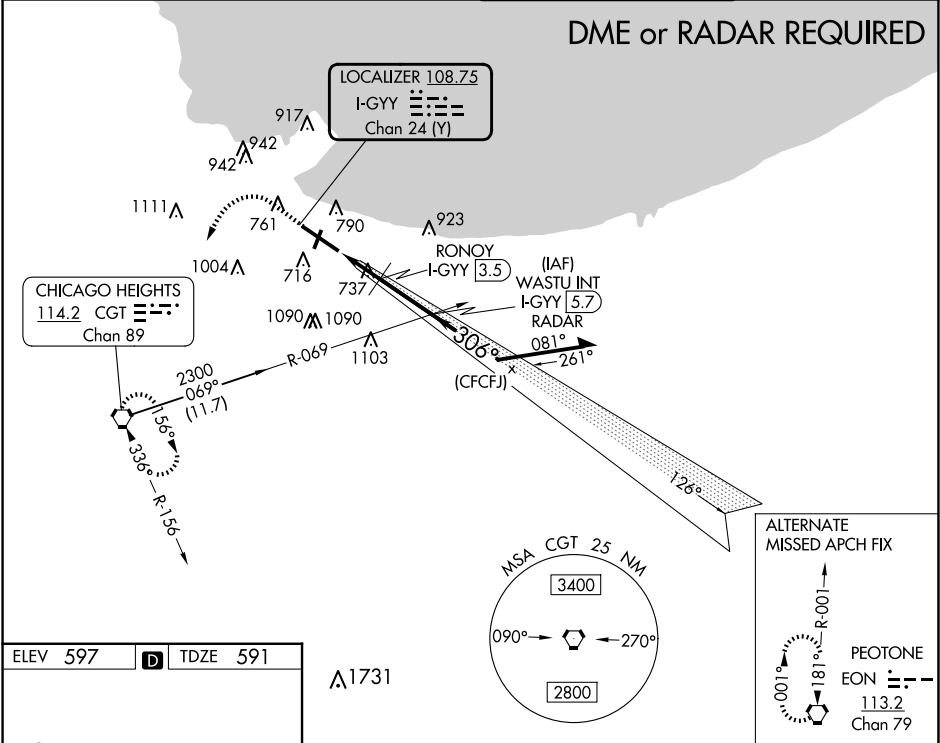
▲

When local altimeter setting not received, use Chicago Midway Intl altimeter setting and increase all DA 46 feet and all MDA 60 feet. VDP NA with Chicago Midway Intl altimeter setting.

MALSR

MISSED APPROACH: Climb to 1500 then climbing left turn to 2300 direct CGT VORTAC and hold.

ATIS 134.575	CHICAGO APP CON 133.1 285.6	GARY TOWER ★ 125.6 (CTAF) 0	GND CON 121.9
------------------------	---------------------------------------	--	-------------------------



ELEV 597 TDZE 591

REIL Rwy 2, 12 and 20
HIRL Rwy 12-30
MIRL Rwy 2-20

FAF to MAP 4.3 NM

Knots	45	60	75	90	105
Min:Sec	5:44	4:18	3:26	2:52	2:27

1500 2300 CGT

WASTU INT I-GYY 5.7 RADAR

RONOY I-GYY 3.5

*I-GYY 2.6

*1240#

2000

126° 306° 2300

GS 3.00° HCH 57

1.1 NM 0.9 NM 2.3 NM

CATEGORY	COPTER
S-ILS 30	791-¼ 200 (200-¼)
S-LOC 30	1240-¼ 649 (700-¼)
RONOY FIX MINIMUMS	
S-LOC 30	1000-¼ 409 (500-¼)

EC-2, 10 JUL 2025 to 07 AUG 2025

EC-2, 10 JUL 2025 to 07 AUG 2025