

APP CRS	Rwy Ldg	4538
159°	TDZE	344
	Apt Elev	345

RNAV (GPS) RWY 14
FITCHBURG MUNI (FIT)

RNP APCH.

▼

⚠

❄

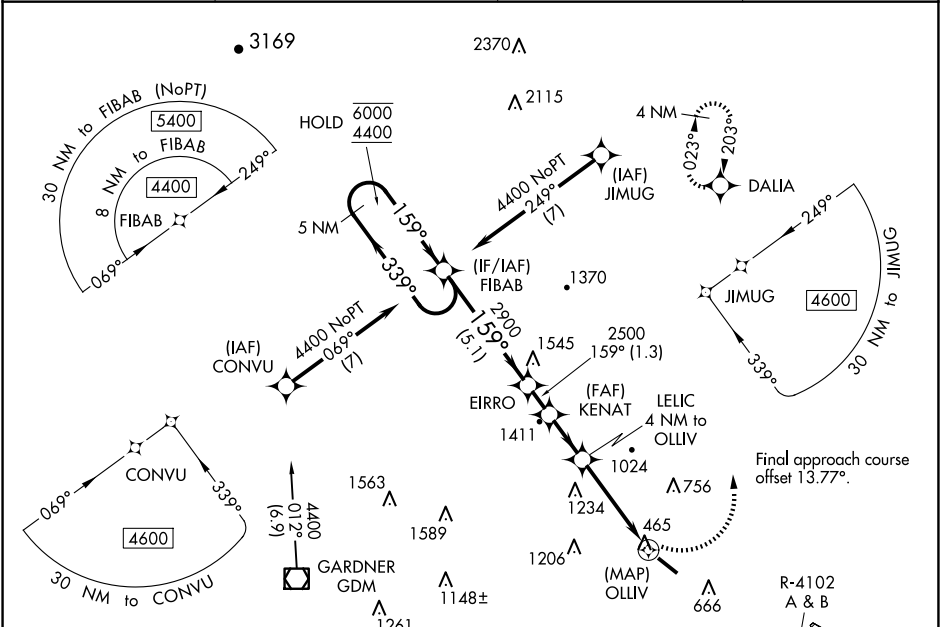
Rwy 14 helicopter visibility reduction below ¾ SM NA.

Circling NA southwest of Rwy 14-32 at night.

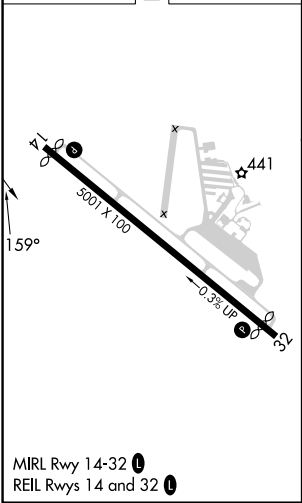
-21°C

MISSED APPROACH: Climbing left turn to 3500 direct DALIA and hold.

ASOS 135.175	BOSTON APP CON 124.4 279.6	UNICOM 122.7 (CTAF)	123.0
-----------------	-------------------------------	------------------------	-------



ELEV 345	D	TDZE 344
----------	---	----------



Procedure NA for arrival on GDM VOR/DME airway radials 339 CW 042.				
<div>5 NM Holding Pattern</div> <div>Visual Segment - Obstacles.</div> <div>3500 DALIA</div>				
<div>6000 ← 339°</div> <div>4400 ← 159°</div> <div>2900</div> <div>2500</div> <div>1860</div> <div>5.1 NM 1.3 NM 2 NM 1.3 2.7 0.5</div>				
CATEGORY	A	B	C	D
LNAV MDA	1420-1¼ 1076 (1100-1¼)	1420-1½ 1076 (1100-1½)	1420-3 1076 (1100-3)	NA
CIRCLING	1420-1¼ 1075 (1100-1¼)	1420-1½ 1075 (1100-1½)	1520-3 1175 (1200-3)	NA

NE-1, 10 JUL 2025 to 07 AUG 2025

NE-1, 10 JUL 2025 to 07 AUG 2025