


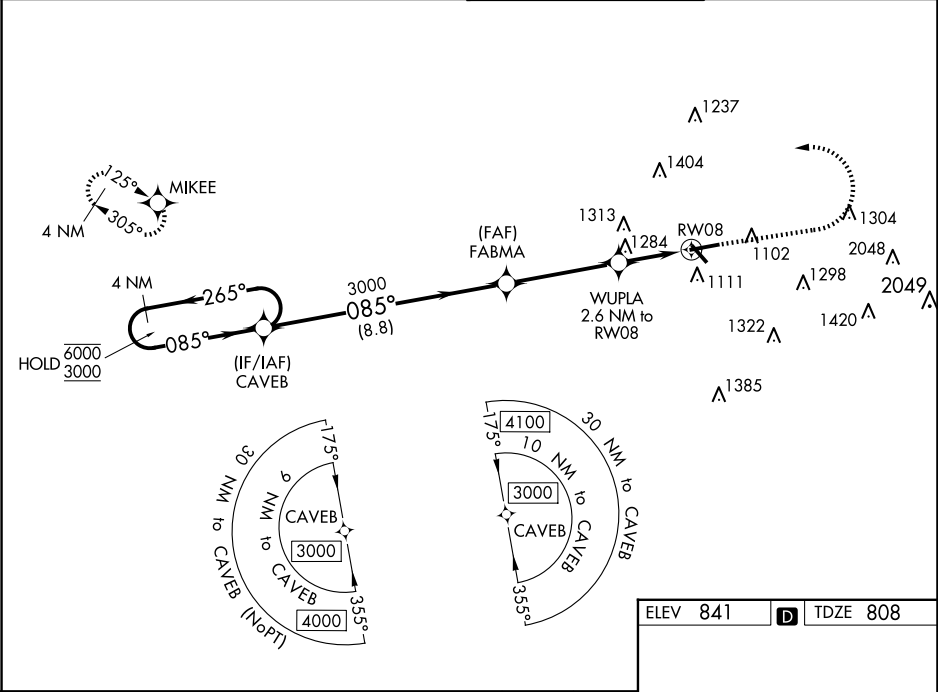
WAAS CH 65804 W08A	APP CRS 085°	Rwy ldg TDZE Apt Elev 5797 808 841
--	------------------------	--

RNAV (GPS) Y RWY 8

FULTON COUNTY EXEC/CHARLIE BROWN FLD (F'TY)

RNP APCH. ▼ Circling Rwy 14, 32 NA at night. Rwy 8 helicopter visibility reduction below ¾ SM NA. ▲ For uncompensated Baro-VNAV systems, LNAV/VNAV NA below -11°C or above 54°C. For inop ALS, increase LNAV/VNAV all Cats visibility to 2½ SM and LNAV Cat C/D to 2 SM. Ridge with trees to 1299' MSL between FAF and runway threshold may be obscured by clouds even with airfield ceiling at or above procedure minimums.	MALSRL 	MISSED APPROACH: Climb to 1600 then climbing left turn to 3000 direct MIKEE and hold.
---	---	--

ATIS 120.175	ATLANTA APP CON 121.0 268.7	FULTON COUNTY TOWER 118.45 257.8	GND CON 121.7 348.6
------------------------	---------------------------------------	--	-------------------------------



4 NM Holding Pattern		CAVEB	FABMA	WUPLA	MIKEE
6000 3000		3000	3000	1600 3000	MIKEE
GP 3.00 TCH 60		3000	3000	1600 3000	MIKEE
8.8 NM		4.1 NM	0.5 NM	2.1 NM	
CATEGORY	A	B	C	D	
LPV DA		1058-½	250 (300-½)		
LNAV/VNAV DA		1637-17⁄8	829 (800-17⁄8)		
LNAV MDA	1540-½	732 (700-½)	1540-15⁄8	732 (700-15⁄8)	
CIRCLING	1540-1	699 (700-1)	1740-2¾ 899 (900-2¾)	1740-3 899 (900-3)	