

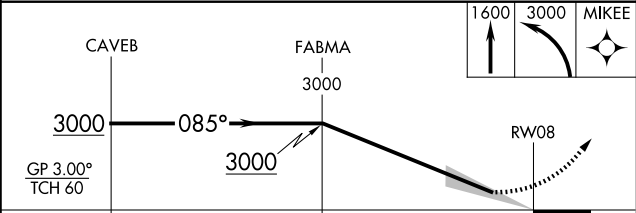
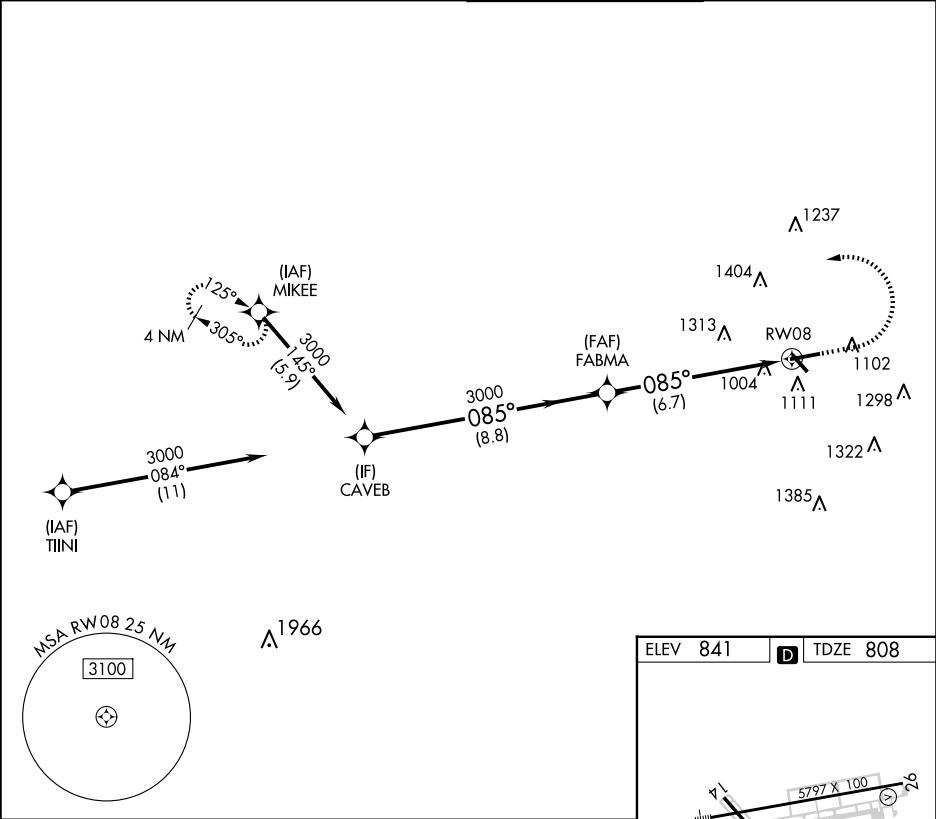
APP CRS	Rwy Idg	5797
085°	TDZE	808
	Apt Elev	841

RNAV (RNP) Z RWY 8

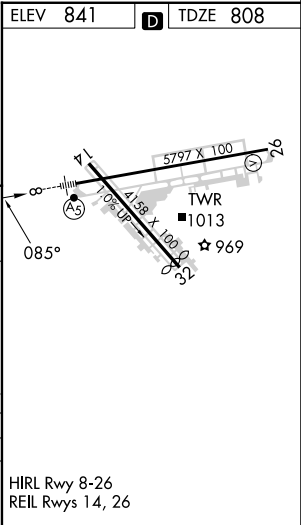
FULTON COUNTY EXEC/CHARLIE BROWN FLD (F'TY)

RNP AR APCH.	MALSR	MISSED APPROACH: Climb to 1600 then climbing left turn to 3000 direct MIKEE and hold.
▼ For uncompensated Baro-VNAV systems, procedure NA below -11°C or above 54°C. Ridge with trees to 1299' MSL between FAF and runway threshold may be obscured by clouds even with airfield ceiling at or above procedure minimums.		

ATIS 120.175	ATLANTA APP CON 121.0 268.7	FULTON COUNTY TOWER 118.45 257.8	GND CON 121.7 348.6
-----------------	--------------------------------	-------------------------------------	------------------------



CATEGORY	A	B	C	D
RNP 0.30 DA		1401-1¼	593 (600-1¼)	



AUTHORIZATION REQUIRED

HIRL Rwy 8-26
REIL Rws 14, 26

SE-4, 10 JUL 2025 to 07 AUG 2025

SE-4, 10 JUL 2025 to 07 AUG 2025