

ATLANTA, GEORGIA

AL-745 (FAA)

24193

WAAS CH <b>65930</b> <b>W26A</b>	APP CRS <b>265°</b>	Rwy Idg <b>5797</b> TDZE <b>814</b> Apt Elev <b>841</b>
--	------------------------	---

RNAV (GPS) RWY 26

FULTON COUNTY EXEC/CHARLIE BROWN FLD (FTY)

RNP APCH.



Rwy 26 helicopter visibility reduction below  $\frac{3}{4}$  SM NA.

**MISSED APPROACH:** Climb to 3000 direct MIKEE and hold.

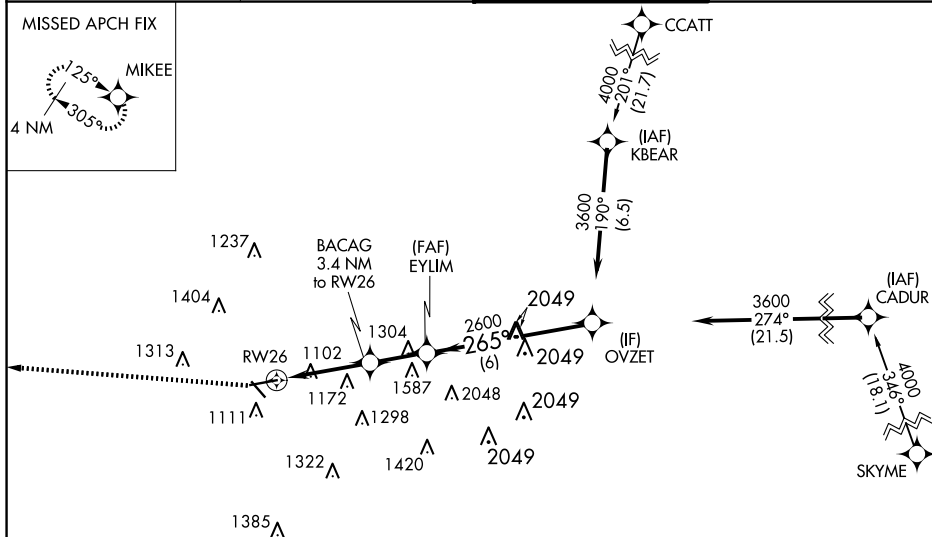
ATIS  
**120.175**

ATLANTA APP CON  
121.0 268.7

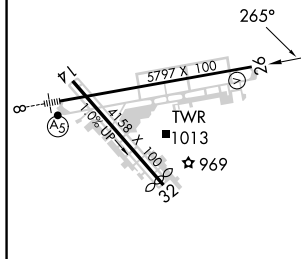
FULTON COUNTY TOWER  
118.45 257.8

GND CON  
121.7 348.6


MISSED APCH FIX



ELEV 841		TDZE 814
----------	---	----------



HIRL Rwy 8-26  
REIL Rwy 14, 26

CATEGORY		A		B		C		D	
LP	MDA	1360-1		546 (600-1)		1360-1½		546 (600-1½)	
LNAV	MDA	1380-1		566 (600-1)		1380-1½		566 (600-1½)	
	CIRCLING	1440-1 599 (600-1)		1520-1 679 (700-1)		1740-2½ 899 (900-2½)		1740-3 899 (900-3)	

ATLANTA, GEORGIA

Amdt 2 22APR21

FULTON COUNTY EXEC/CHARLIE BROWN FLD (FTY)

33°47'N-84°31'W

RNAV (GPS) RWY 26

SE-4, 10 JUL 2025 to 07 AUG 2025