

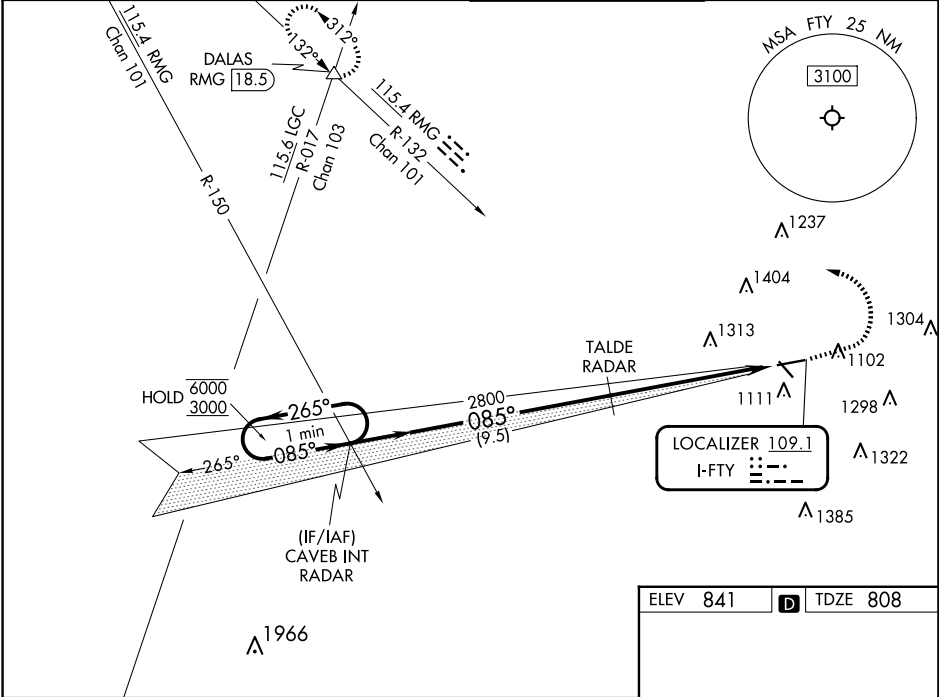
LOC I-FTY	APP CRS	Rwy Idg	5797
109.1	085°	TDZE	808
		Apt Elev	841

ILS or LOC RWY 8

FULTON COUNTY EXEC/CHARLIE BROWN FLD (F'TY)

RADAR required to define TALDE. RADAR required for procedure entry.	MALSR	MISSED APPROACH: Climb to 1800 then climbing left turn to 4000 on heading 290° and RMG R-132 to DALAS INT/ RMG VORTAC 18.5 DME and hold.
▼ Circling Rwy 14, 32 NA at night. Rwy 8 helicopter visibility reduction below ¾ SM NA. ▲ For inop ALS, increase S-LOC 8 Cat A visibility to 1 SM, Cat C/D visibility to 2½ SM. Ridge with trees to 1299' MSL between FAF and runway threshold may be obscured by clouds even with airfield ceiling at or above procedure minimums.	AS	

ATIS 120.175	ATLANTA APP CON 121.0 268.7	FULTON COUNTY TOWER 118.45 257.8	GND CON 121.7 348.6
-----------------	--------------------------------	-------------------------------------	------------------------



One Minute Holding Pattern		CAVB INT RADAR	1800	4000	RMG R-132	DALAS
6000 3000		265° 085°	2800	085°	hdg 290°	△
GS 3.00° TCH 63			TALDE RADAR			
			*2800			
			9.5 NM	6.1 NM		
CATEGORY	A	B	C	D		
S-ILS 8	1058-½ 250 (300-½)				HIRL Rwy 8-26 REIL Rws 14, 26	
S-LOC 8	1640-¾	832 (800-¾)	1640-1⅞	832 (800-1⅞)	FAF to MAP 6.1 NM	
CIRCLING	1640-1 799 (800-1)	1640-1¼ 799 (800-1¼)	1740-2¾ 899 (900-2¾)	1740-3 899 (900-3)	Knots 60 90 120 150 180 Min:Sec 6:06 4:04 3:03 2:26 2:02	

ILS or LOC RWY 8

SE-4, 10 JUL 2025 to 07 AUG 2025

SE-4, 10 JUL 2025 to 07 AUG 2025