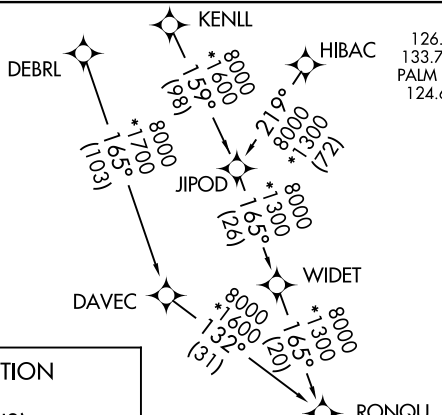


RNAV 1 - DME/DME/IRU or GPS.

RADAR required.



MIAMI APP CON
05 251.1 (9000)
75 371.9 (7000)
BEACH APP CON
5 317.4 (12000)
FLL D-ATIS
135.0
HWO ATIS
135.475
KHST ATIS ★
132.275 269.9
MIA D-ATIS
119.15
OPF ATIS
125.9
TMB ATIS
124.0
X51 AWOS-3
118.375

ARRIVAL ROUTE DESCRIPTION

DEBRL TRANSITION (DEBRL.TARPN3)

HIBAC TRANSITION (HIBAC.TARPN3)

JIPOD TRANSITION (JIPOD.TARPN3)

KENLL TRANSITION (KENLL.TARPN3)

RONQU TRANSITION (RONQU.TARPN3)

LANDING ALL AIRPORTS: From TARPEN on track 208° to SPNER, then on track 191° to IMAPY, then on track 191°. Expect RADAR vectors to final approach course.

NOTE: Turboprop and EA50, E50P, SF50, C510, and C525 aircraft only.

NOTE: JIPOD Transition for KMCO, KORL, KSFB, KISM, and KLEE departures only.

NOTE: Do not file DEBRL or RONQU Transition - to be assigned by ATC.

IMAPY


Ldg KFL/KMIA/07FA/X51/
KHST/KTMB/KHWO/KOPF

FORT LAUDERDALE/
HOLLYWOOD INTL NORTH PERRY MIAMI-OPA LOCKA EXEC MIAMI INTL 

MIAMI EXEC

MIAMI HOMESTEAD 
GENERAL AVIATION

© HOMESTEAD ARB

OCEAN REEF CLUB
(Pvt) 

NOTE: Chart not to scale.