

WAAS CH <b>58336</b> <b>W28B</b>	APP CRS <b>276°</b>	Rwy Idg TDZE <b>65</b> Apt Elev <b>65</b>	<b>8000</b>
--	------------------------	---	-------------

RNAV (GPS) RWY 28L

FORT LAUDERDALE/HOLLYWOOD INTL (FLL)

RNP APCH-GPS.

▼

▲

Inop table does not apply to LPV. For uncompensated Baro-VNAV systems, LNAV/VNAV NA below 7°C or above 54°C. Simultaneous approach authorized. LNAV procedure NA during simultaneous operations. Use of FD or AP required during simultaneous operations.

MALSF

MISS

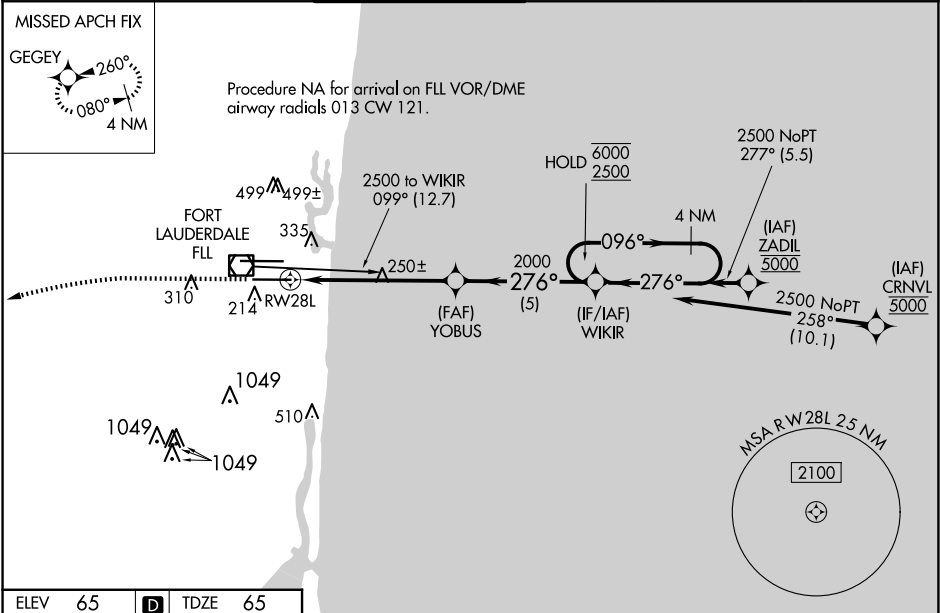
ED

MISS

ED

MISSED APPROACH: Climb to 1000 then climbing left turn to 3000 direct GEGEY and hold.

D-ATIS <b>135.0</b>	MIAMI APP CON <b>133.775 285.6</b>	FORT LAUDERDALE TOWER <b>119.3 257.8</b>	GND CON <b>121.4</b>	CLNC DEL <b>128.4</b>	CPDLC
------------------------	---------------------------------------	---	-------------------------	--------------------------	-------



ELEV 65

D

TDZE 65

1000

3000

GEGEY

VGSI and RNAV glidepath not coincident (VGSI Angle 3.00/TCH 69).

WIKIR

4 NM Holding Pattern

096°

276°

6000

2500

GP 3.00° TCH 53

YOBUS

2000

1.2 NM to RW28L

1.2 NM

4.7 NM

5 NM

RW28L

276°

2000

201

66

9000 X 150

8000 X 150

0.4% UP

1.0% DOWN

276°

HIRL Rwy 10L-28R and 10R-28L

CATEGORY	A	B	C	D
LPV DA	265/40	200 (200-¾)		
LNAV/VNAV DA	459/45	394 (400-⅞)		
LNAV MDA	500/40	435 (500-¾)	500/50	435 (500-1)
CIRCLING	680-1	615 (700-1)	800-2 735 (800-2)	800-2¼ 735 (800-2¼)