

WAAS CH <b>63236</b> <b>W10B</b>	APP CRS <b>096°</b>	Rwy Idg TDZE <b>14</b> Apt Elev <b>65</b>
--	------------------------	---

RNAV (GPS) RWY 10R

FORT LAUDERDALE/HOLLYWOOD INTL (FLL)

RNP APCH-GPS.

▼

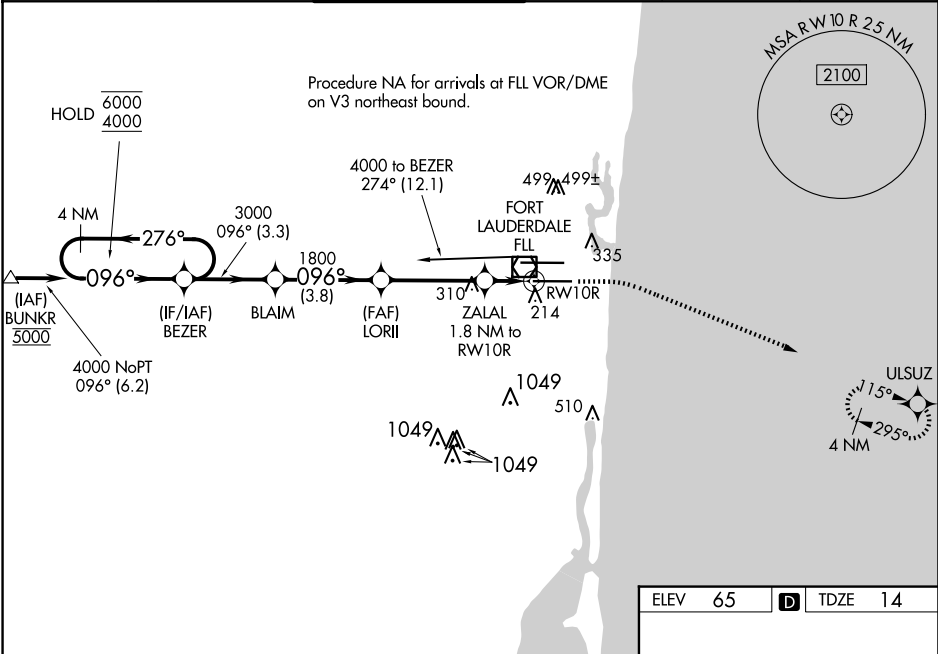
⚠

LNAV procedure NA during simultaneous operations. Rwy 10R helicopter visibility reduction below RVR 4000 NA. Inop table does not apply to LPV all Cats. For uncompensated Baro-VNAV systems, LNAV/VNAV NA below 7° C or above 54° C. For inop ALS, increase LNAV Cats C and D visibility to 1½ SM. Use of FD or AP required during simultaneous operations

MALSF

MISSED APPROACH: Climb to 800 then climbing right turn to 2000 direct ULSUZ and hold.

D-ATIS <b>135.0</b>	MIAMI APP CON <b>133.775 285.6</b>	FORT LAUDERDALE TOWER <b>119.3 257.8</b>	GND CON <b>121.4</b>	CLNC DEL <b>128.4</b>	CPDLC
------------------------	---------------------------------------	---	-------------------------	--------------------------	-------



VGSi and RNAV glidepath not coincident (VGSi Angle 3.00/TCH 71).		ELEV 65		D TDZE 14	
4 NM Holding Pattern		800		2000	
6000 ← 276°		↑		↗	
4000 → 096°		ZALAL 1.8 NM to RWY 10R		ULSUZ	
GP 3.00°		1.2 NM to RWY 10R		↖	
TCH 51		RWY 10R		↘	
3.3 NM		3.8 NM		3.7 NM	
CATEGORY A		B		C	
LPV DA		264/40		250 (200-¾)	
LNAV/VNAV DA		355/40		341 (300-¾)	
LNAV MDA		460/40		446 (400-¾)	
CIRCLING		680-1 615 (700-1)		800-2 735 (800-2)	
				800-2¼ 735 (800-2¼)	

