

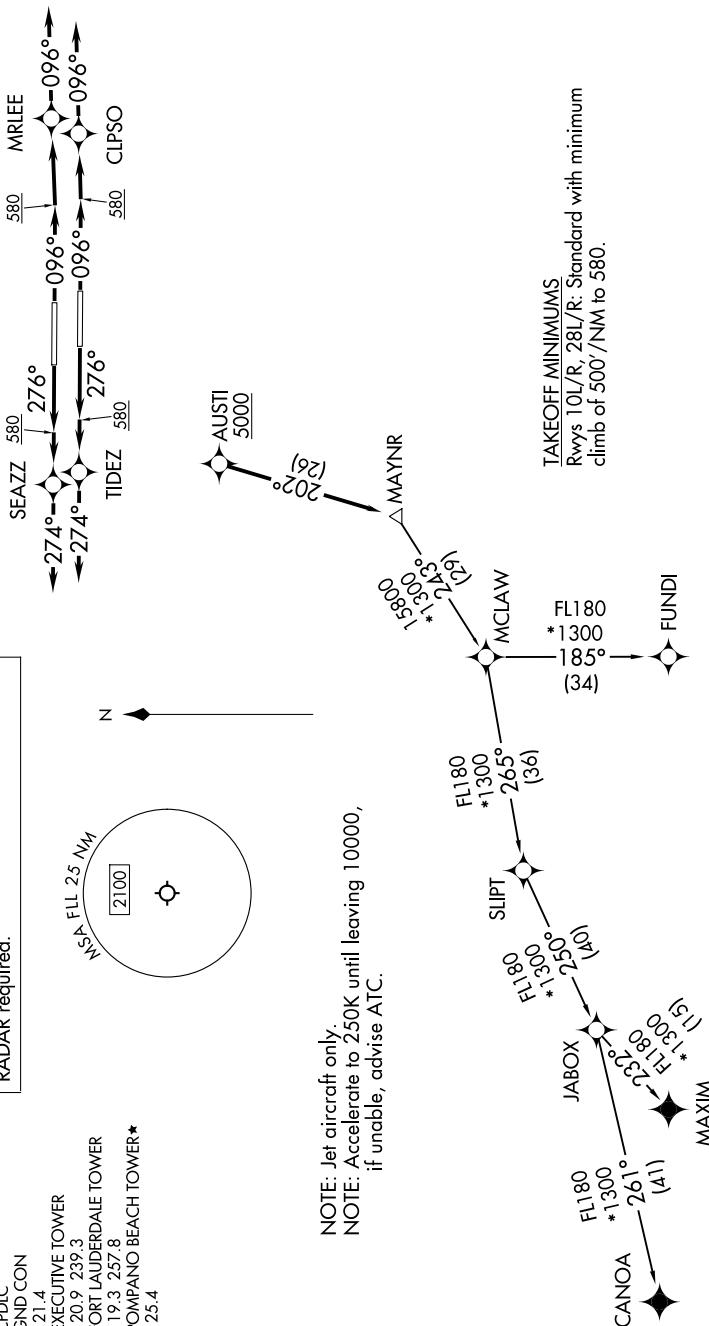
FORT LAUDERDALE, FLORIDA

TOP ALTITUDE:
4000

RNAV 1 - DME/DME/IRU or GPS.
From SIPT to MAXIM: RNAV 1- GPS.
From SIPT to CANOA: RNAV 1- GPS.
RADAR required for non-GPS equipped aircraft.
RADAR required.

MIAMI DEP CON	
119.45	290.325
D-ATIS	
135.0	
CLNC DEL	
128.4	
CPDLC	
GND CON	
121.4	
EXECUTIVE TOWER	
120.9	239.3
FORT LAUDERDAL	
119.3	257.8
POMPANO BEACH	
125.4	

NOTE: Jet aircraft only.
NOTE: Accelerate to 250K until leaving 10000,
if unable, advise ATC.



NOTE: Chart not to scale.

(CONTINUED ON FOLLOWING PAGE)

SE-3, 10 JUL 2025 to 07 AUG 2025

FORT LAUDERDALE/HOLLYWOOD INTL (FLL)

(MAYNR3.MAYNR) 31OCT24