

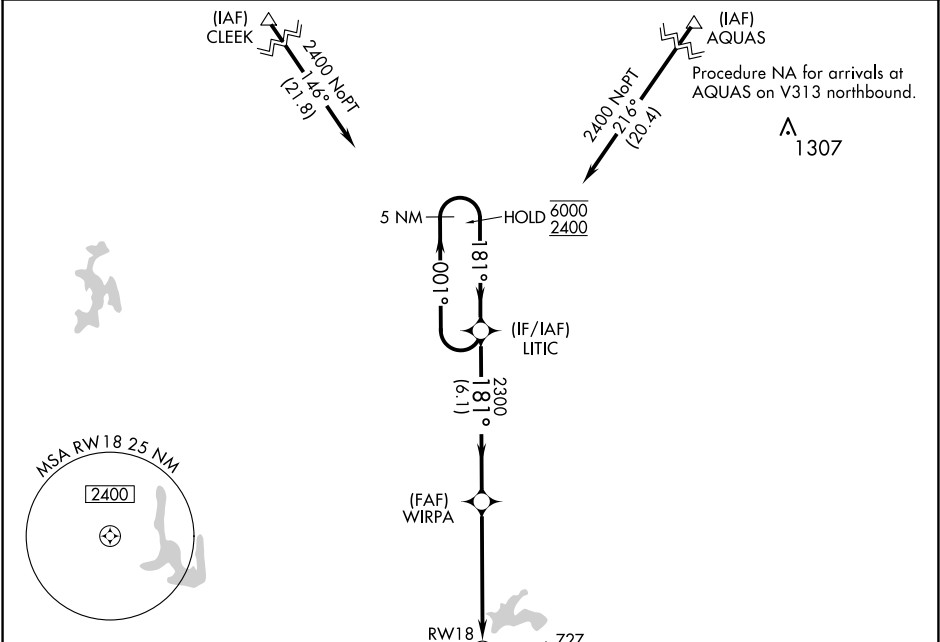
APP CRS	Rwy Idg	3751
181°	TDZE	534
	Apt Elev	537

RNAV (GPS) RWY 18

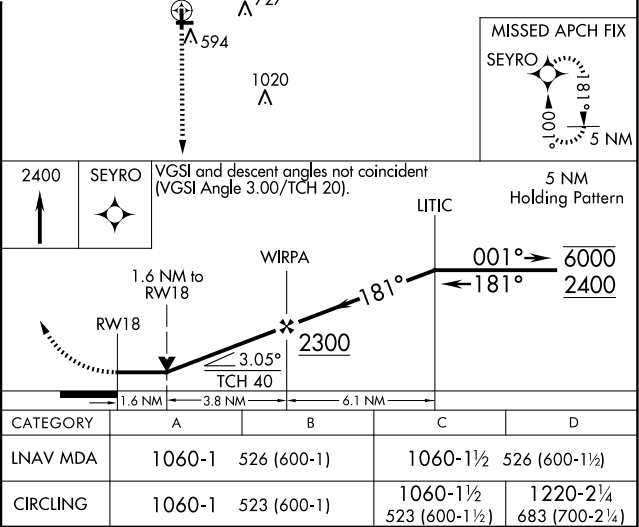
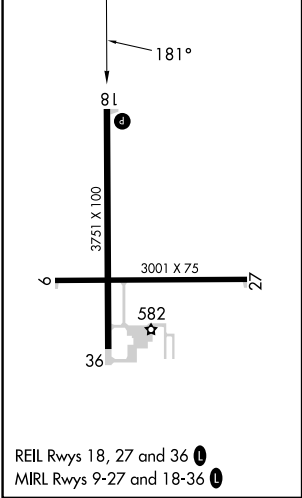
VANDALIA MUNI (VLA)

RNP APCH - GPS.	MISSED APPROACH: Climb to 2400 direct SEYRO and hold.
<div><div></div><div>Rwy 18 helicopter visibility reduction below ¾ SM NA. When local altimeter setting not received, use Salem altimeter setting; increase all MDAs 60 feet and visibility Cats C and D ¼ SM.</div></div>	

AWOS-AV 122.8	KANSAS CITY CENTER 124.3 269.15	UNICOM 122.8 (CTAF) 0
------------------	------------------------------------	--------------------------



ELEV 537	TDZE 534
----------	----------



EC-3, 10 JUL 2025 to 07 AUG 2025

EC-3, 10 JUL 2025 to 07 AUG 2025