

DALLAS, TEXAS

AL-742 (FAA)

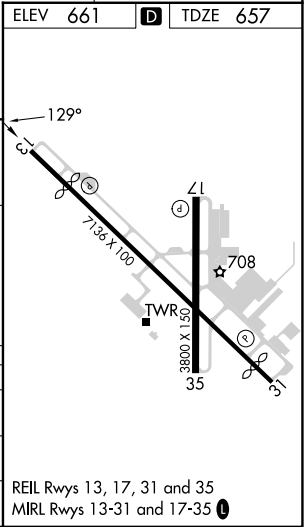
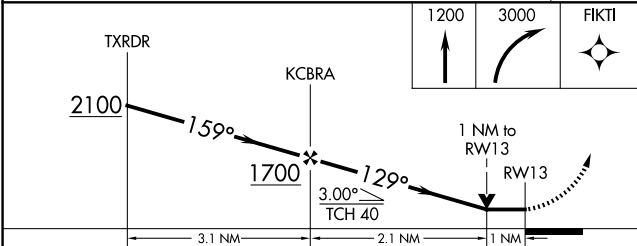
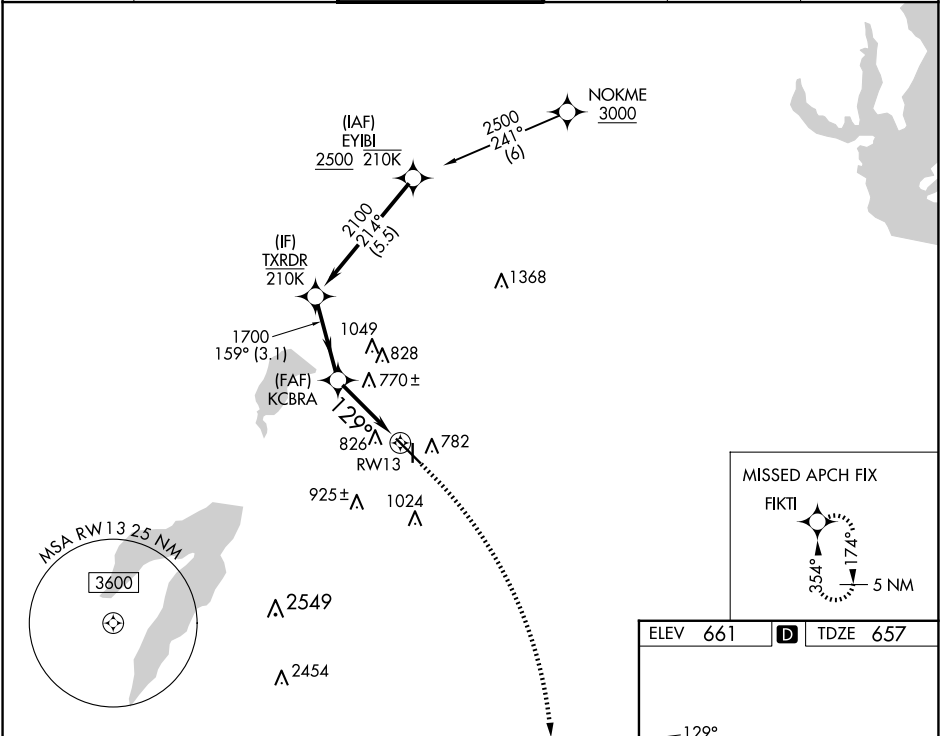
25163

WAAS CH <b>50247</b> <b>W13B</b>	APP CRS <b>129°</b>	Rwy Ldg TDZE <b>657</b> Apt Elev <b>661</b>
--	------------------------	---

RNAV (GPS) Z RWY 13  
DALLAS EXEC (RBD)

RNP APCH-GPS.	MISSED APPROACH: Climb to 1200 then climbing right turn to 3000 direct FIKTI and hold.
Rwy 13 helicopter visibility reduction below 3/4 SM NA.	

ATIS <b>126.35</b>	LONE STAR APP CON <b>125.2 343.65</b>	EXECUTIVE TOWER ★ <b>127.25 (CTAF)</b>	GND CON <b>119.475</b>	CLNC DEL <b>118.625</b>	UNICOM <b>122.95</b>
-----------------------	--	---	---------------------------	----------------------------	-------------------------



CATEGORY	A	B	C	D
LP MDA	1020-1 363 (400-1)			
LNAV MDA	1060-1 403 (400-1)	1060-1 1/8 403 (400-1 1/8)		
CIRCLING	1160-1 499 (500-1)	1220-1 559 (600-1)	1340-2 679 (700-2)	1400-2 1/4 739 (800-2 1/4)

DALLAS, TEXAS  
Orig 12JUN25

32°41'N-96°52'W

DALLAS EXEC (RBD)  
RNAV (GPS) Z RWY 13

SC-2, 10 JUL 2025 to 07 AUG 2025

SC-2, 10 JUL 2025 to 07 AUG 2025