


DALLAS, TEXAS

AL-742 (FAA)

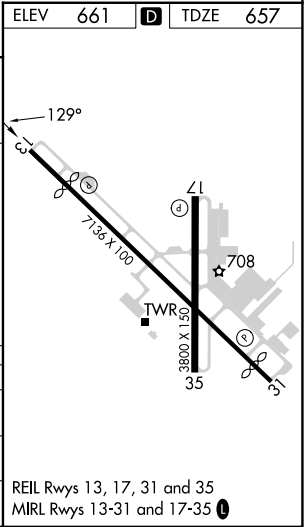
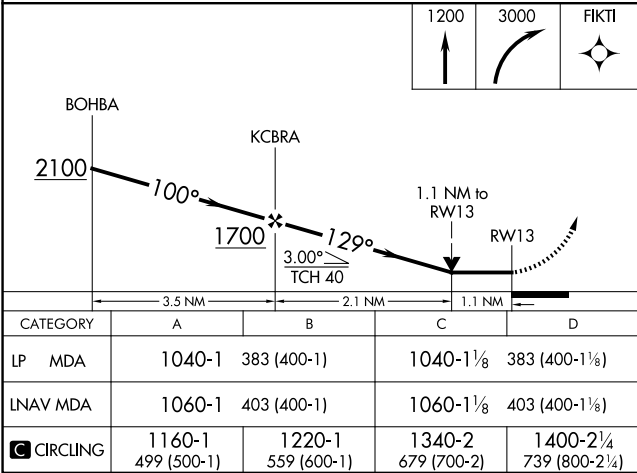
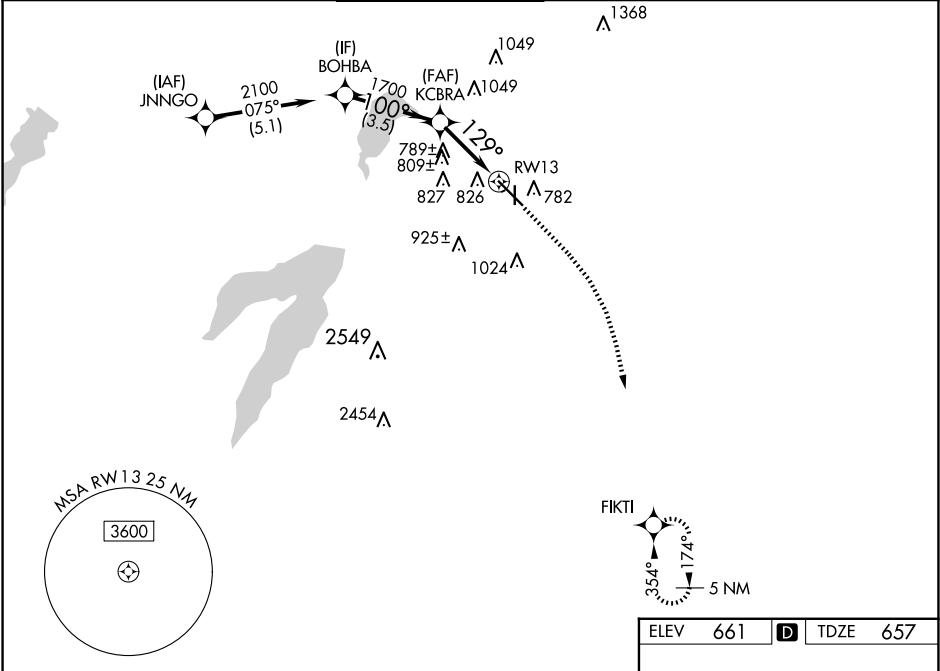
25163

WAAS CH 78444 W13A	APP CRS 129°	Rwy Ldg TDZE 657 Apt Elev 661
--	------------------------	---

RNAV (GPS) Y RWY 13
DALLAS EXEC (RBD)

RNP APCH - GPS.		MISSED APPROACH: Climb to 1200 then climbing right turn to 3000 direct FIKTI and hold.
	Rwy 13 helicopter visibility reduction below 3/4 M NA.	

ATIS 126.35	LONE STAR APP CON 125.2 343.65	EXECUTIVE TOWER★ 127.25 (CTAF) 0	GND CON 119.475	CLNC DEL 118.625	UNICOM 122.95
-----------------------	--	--	---------------------------	----------------------------	-------------------------



DALLAS, TEXAS
Amdt 1 12JUN25

32°41'N-96°52'W

DALLAS EXEC (RBD)
RNAV (GPS) Y RWY 13

SC-2, 10 JUL 2025 to 07 AUG 2025