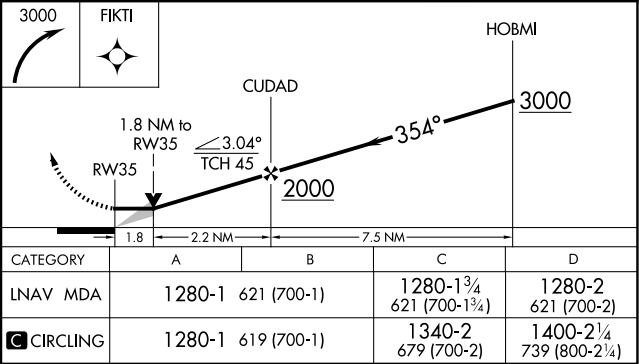
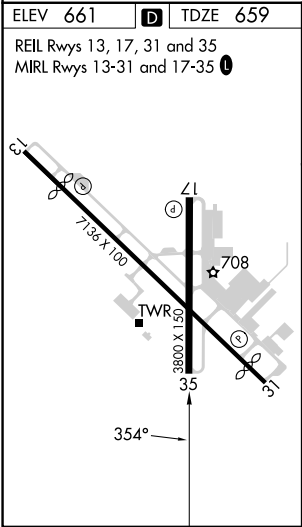
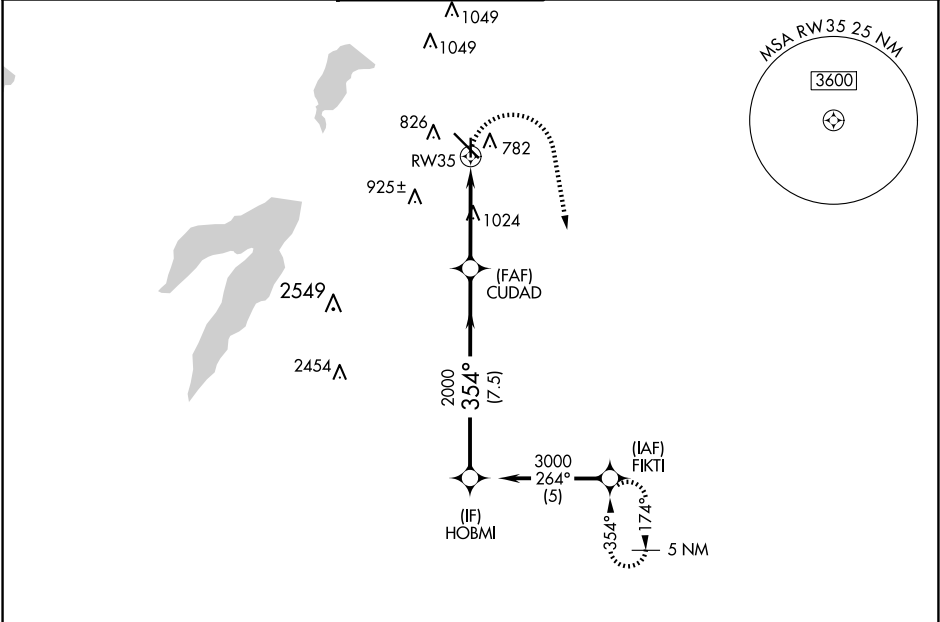


APP CRS	Rwy Idg	3800
354°	TDZE	659
	Apt Elev	661

RNAV (GPS) RWY 35  
DALLAS EXEC (RBD)

RADAR required for procedure entry. RNP APCH.		MISSED APPROACH: Climbing right turn to 3000 direct FIKTI and hold.			
ATIS 126.35	LONE STAR APP CON 125.2 343.65	EXECUTIVE TOWER ★ 127.25 (CTAF) 0	GND CON 119.475	CLNC DEL 118.625	UNICOM 122.95



SC-2, 10 JUL 2025 to 07 AUG 2025

SC-2, 10 JUL 2025 to 07 AUG 2025