

DALLAS, TEXAS

AL-742 (FAA)

24305

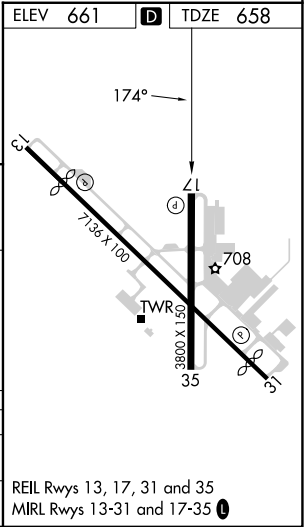
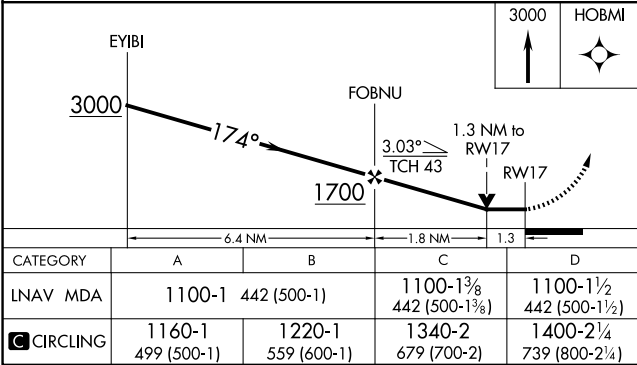
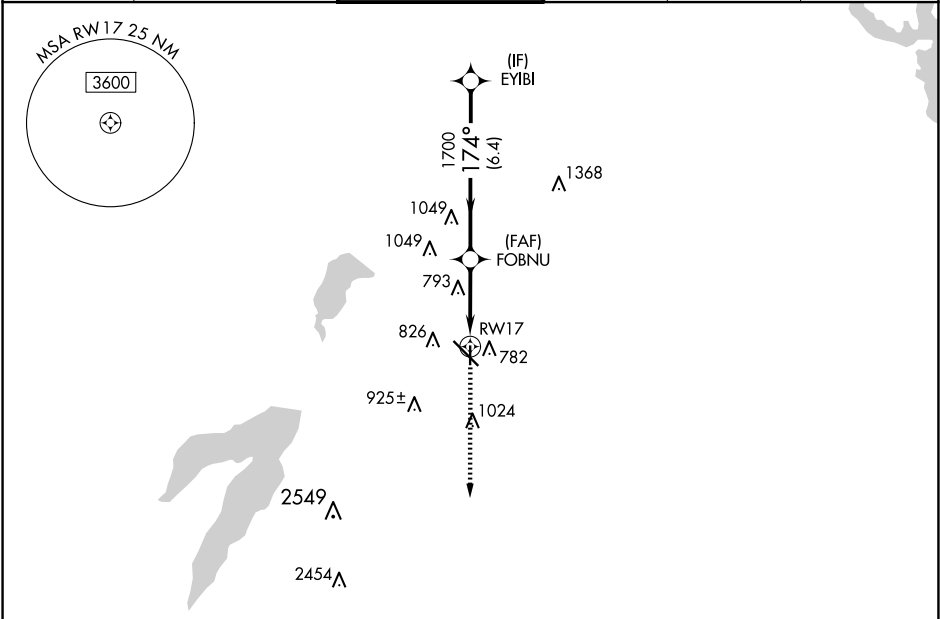
APP CRS	Rwy Idg	3800
174°	TDZE	658
	Apt Elev	661

RNAV (GPS) RWY 17

DALLAS EXEC (RBD)

RNP APCH.	MISSED APPROACH: Climb to 3000 direct HOBMI and hold.
<div><div></div><div>Rwy 17 helicopter visibility reduction below ¾ SM NA.</div></div>	

ATIS 126.35	LONE STAR APP CON 125.2 343.65	EXECUTIVE TOWER ★ 127.25 (CTAF) 0	GND CON 119.475	CLNC DEL 118.625	UNICOM 122.95
----------------	-----------------------------------	--------------------------------------	--------------------	---------------------	------------------



DALLAS, TEXAS
Orig-B 03DEC20

32°41'N-96°52'W

DALLAS EXEC (RBD)

RNAV (GPS) RWY 17