

DALLAS, TEXAS

AL-742 (FAA)

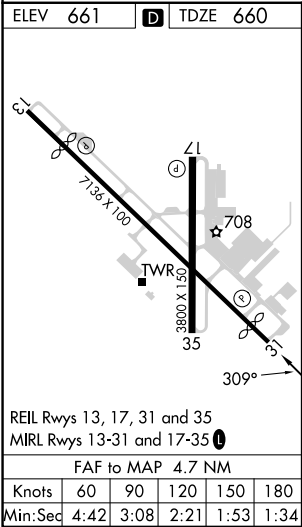
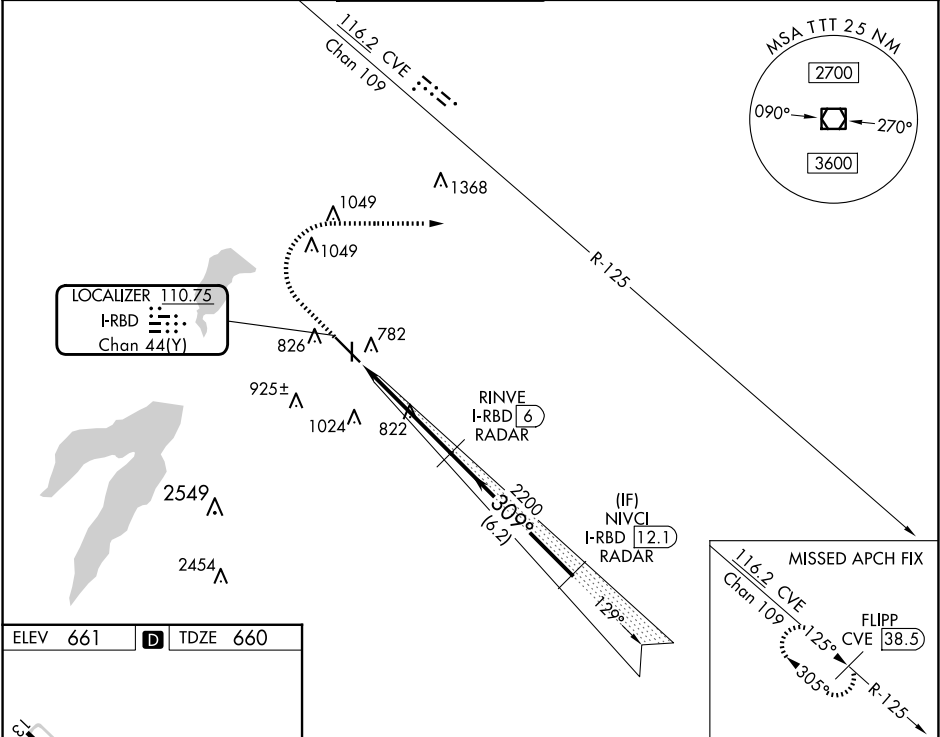
24305

LOC/DME I-RBD 110.75 Chan 44 (Y)	APP CRS 309°	Rwy Idg TDZE 660 Apt Elev 661
--	------------------------	---

ILS or LOC RWY 31
DALLAS EXEC (RBD)

RADAR required for procedure entry, DME or RADAR required for LOC only.	MISSED APPROACH: Climb to 1200 then climbing right turn to 2500 on heading 090° and CVE VOR/DME R-125 to FLIPP/CVE 38.5 DME and hold.
--	---

ATIS 126.35	LONE STAR APP CON 125.2 343.65	EXECUTIVE TOWER★ 127.25 (CTAF) 0	GND CON 119.475	CLNC DEL 118.625	UNICOM 122.95
-----------------------	--	---	---------------------------	----------------------------	-------------------------



1200	2500	CVE R-125	FLIPP CVE 38.5	RINVE I-RBD 6	NIVCI I-RBD 12.1
hdg 090°					
*LOC only.	*I-RBD 2.4	I-RBD 1.2	2200	309°	3000
	1.2 NM	3.5 NM	6.2 NM		GS 3.00° TCH 45
CATEGORY	A	B	C	D	
S-ILS 31	860-3/4 200 (200-3/4)				
S-LOC 31	1080-1 420 (500-1)		1080-1 1/8 420 (500-1 1/8)		
CIRCLING	1160-1 499 (500-1)	1220-1 559 (600-1)	1340-2 679 (700-2)	1400-2 1/4 739 (800-2 1/4)	

DALLAS, TEXAS
Amdt 9A 03DEC20

32°41'N-96°52'W

DALLAS EXEC (RBD)
ILS or LOC RWY 31

SC-2, 10 JUL 2025 to 07 AUG 2025

SC-2, 10 JUL 2025 to 07 AUG 2025