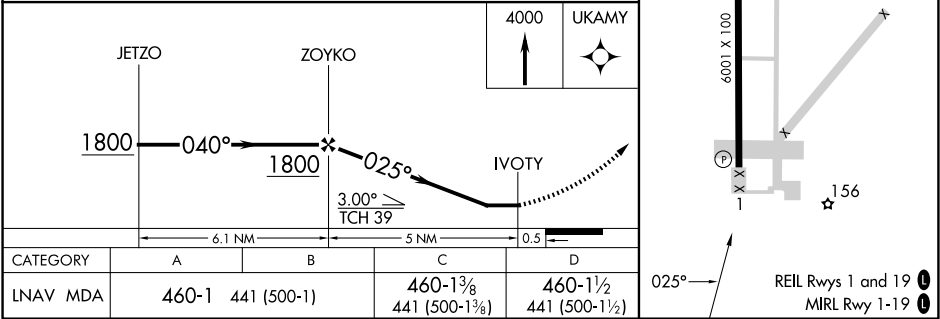
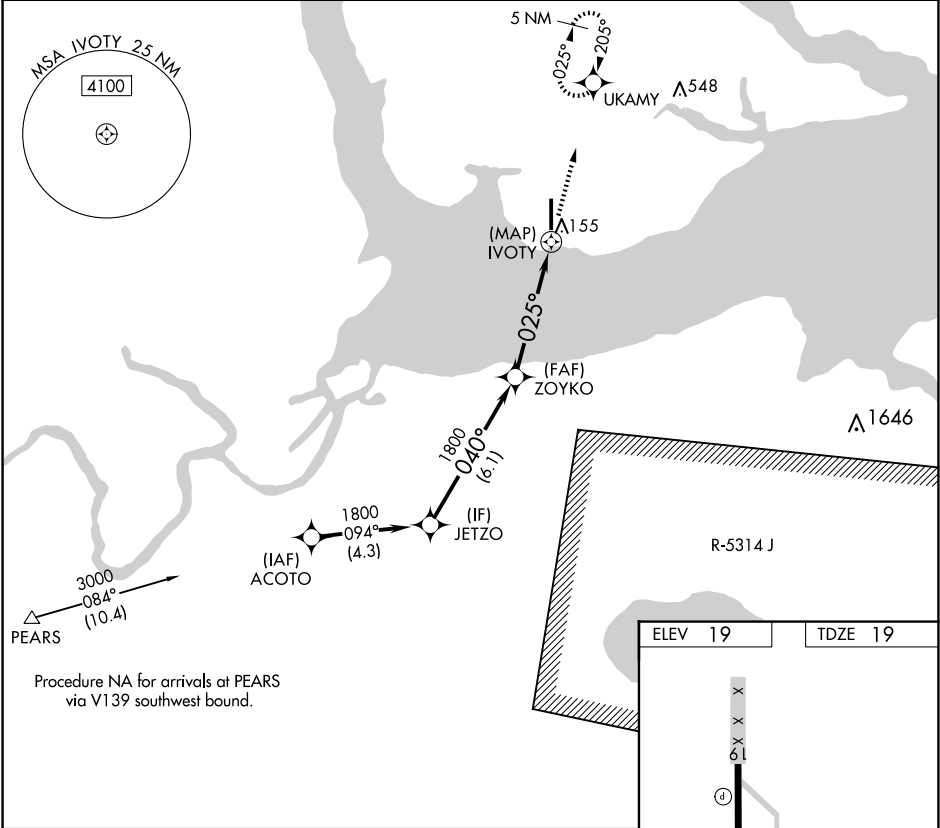


APP CRS	Rwy Idg	6001
025°	TDZE	19
	Apt Elev	19

RNAV (GPS) RWY 1
NORTHEASTERN RGNL (EDE)

RNP APCH+GPS.	MISSED APPROACH: Climb to 4000 direct UKAMY and hold, continue climb-in-hold to 4000.
▼ ▲ If local altimeter setting not received, use Elizabeth City altimeter setting and increase all MDAs 60 feet. Rwy 1 helicopter visibility reduction below 1 SM NA. Procedure NA at night.	

AWOS-3 118.275	WASHINGTON CENTER 123.85 279.65	UNICOM 123.0 (CTAF) 0
-------------------	------------------------------------	--------------------------



SE-2, 10 JUL 2025 to 07 AUG 2025

SE-2, 10 JUL 2025 to 07 AUG 2025