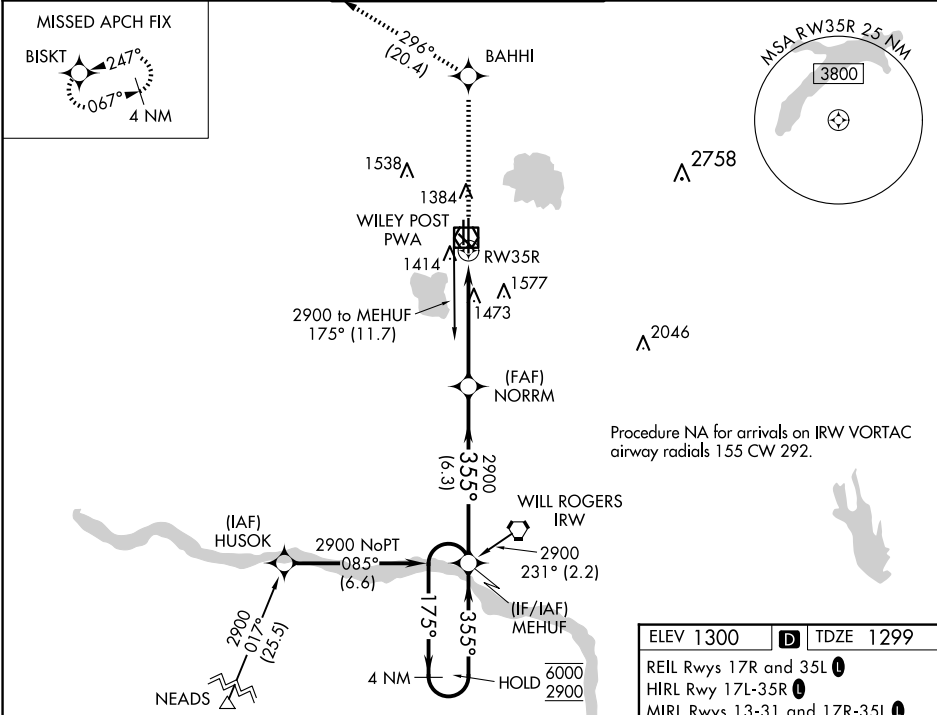


WAAS CH <b>42716</b> <b>W35A</b>	APP CRS <b>355°</b>	Rwy Idg TDZE <b>1299</b> Apt Elev <b>1300</b>
--	------------------------	---

RNAV (GPS) RWY 35R  
WILEY POST (PWA)

RNP APCH-GPS. For uncompensated Baro-VNAV systems, LNAV/VNAV NA below -13°C or above 54°C. ASR			MALSR	MISSED APPROACH: Climb to 3100 direct BAHHI and on track 296° to BISKT and hold.
ATIS <b>128.725</b>	OKE CITY APP CON <b>124.6 266.8</b>	WILEY POST TOWER ★ <b>126.9 (CTAF) 306.9</b>	GND CON <b>121.7</b>	UNICOM <b>122.95</b>



VGSI and RNAV glidepath not coincident (VGSI Angle 3.00/TCH 54).				
4 NM Holding Pattern MEHUF NORRM 3100 BAHHI ir 296° BISKT				
6000 ← 175° 2900 355° → 355° 2900 1.2 NM to RW35R RW35R				
GP 3.00° TCH 50 6.3 NM 3.7 NM 1.2				
CATEGORY	A	B	C	D
LPV DA	1499-1/2 200 (200-1/2)			
LNAV/VNAV DA	1755-7/8 456 (500-7/8)			
LNAV MDA	1740-1/2 441 (500-1/2)		1740-7/8 441 (500-7/8)	
CIRCLING	1780-1 480 (500-1)		1880-1 580 (600-1)	
			1880-2 580 (600-2)	

SC-1, 10 JUL 2025 to 07 AUG 2025

SC-1, 10 JUL 2025 to 07 AUG 2025