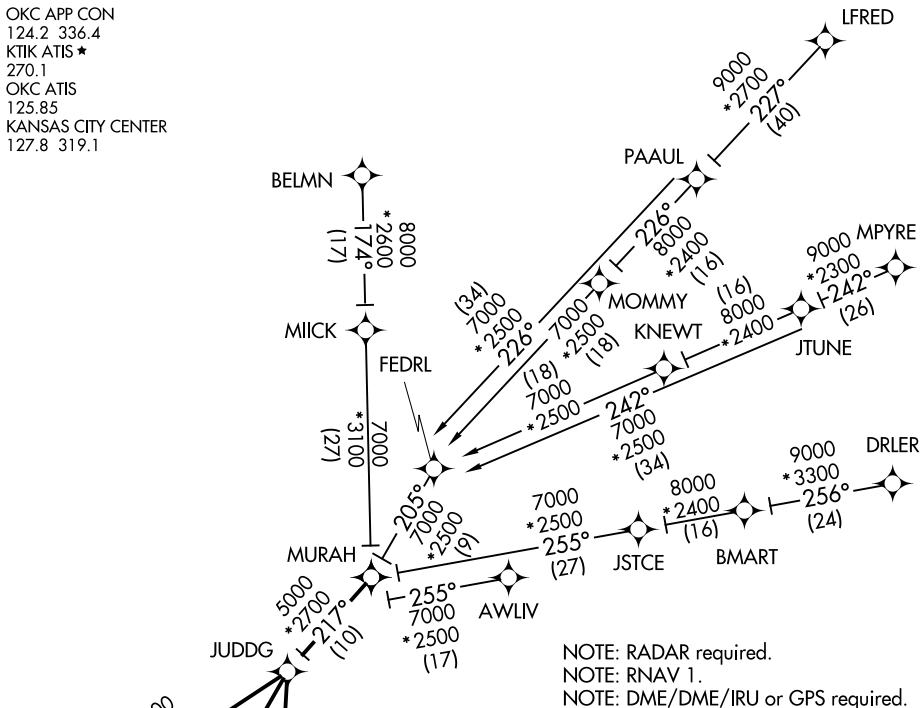


OKLAHOMA CITY, OKLAHOMA

OKC APP CON
124.2 336.4
KTIK ATIS ★
270.1
OKC ATIS
125.85
KANSAS CITY CENTER
127.8 319.1



NOTE: RADAR required.
NOTE: RNAV 1.
NOTE: DME/DME/IRU or GPS required.

ARRIVAL ROUTE DESCRIPTION

- AWLIV TRANSITION (AWLIV.JUDDG2)
BELMN TRANSITION (BELMN.JUDDG2): (For non-GPS
equipped aircraft, IFI DME must be operational).
BMART TRANSITION (BMART.JUDDG2)
DRLER TRANSITION (DRLER.JUDDG2)
JTUNE TRANSITION (JTUNE.JUDDG2)
LFRED TRANSITION (LFRED.JUDDG2)
MPYRE TRANSITION (MPYRE.JUDDG2)
PAAUL TRANSITION (PAAUL.JUDDG2)

From MURAH on track 217° to JUDDG.

LANDING OUN/TIK: From JUDDG on track 192° to PEGOE, then on track 192°. Expect radar vectors to final approach course.

LANDING PWA RWY 17L: From JUDDG on track 236° to ODPIE, then on track 236°. Expect radar vectors to final approach course.

LANDING PWA RWY 35R: From JUDDG on track 225° to QUOIT, then on track 225°. Expect radar vectors to final approach course.

NOTE: Chart not to scale.

OKLAHOMA CITY, OKLAHOMA

(MURAH.JUDDG2) 10NOV16