

LOC/DME I-TFM  
**110.15**  
Chan 38 (Y)

APP CRS  
**355°**

Rwy Idg  
TDZE **1299**  
Apt Elev **1300**

ILS or LOC RWY 35R

WILEY POST (PWA)

DME and RADAR required.

MALSR

MISSED APPROACH: Climb to 1800 then climbing left turn to 3000 on heading 180° and PWA VOR/DME R-216 to JESKE INT/PWA 14.5 DME and hold.

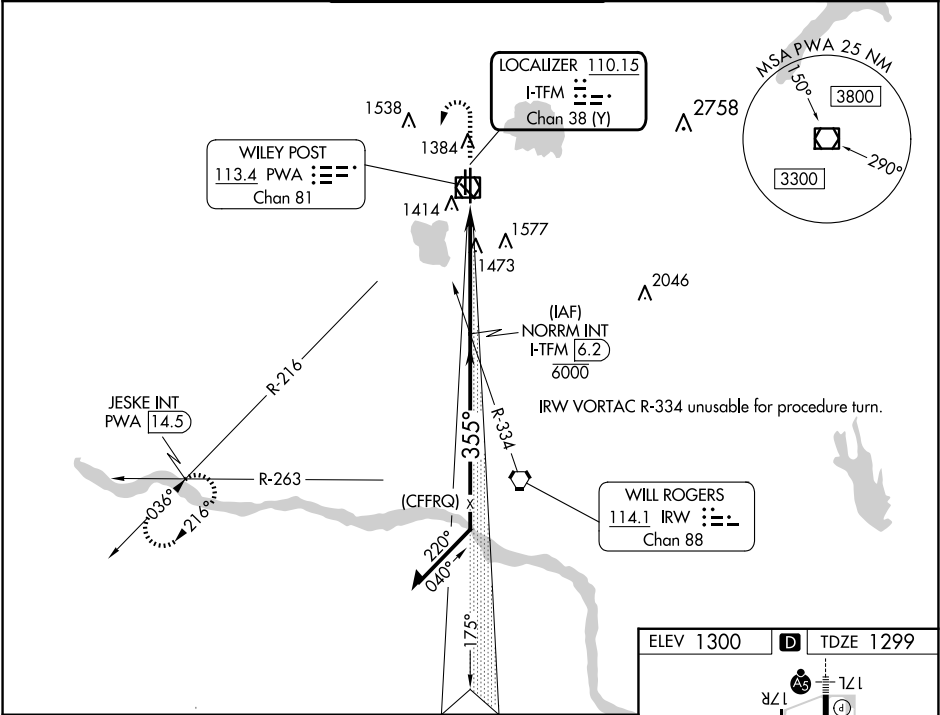
ATIS  
**128.725**

OKE CITY APP CON  
**124.6 266.8**

WILEY POST TOWER ★  
**126.9 (CTAF) 306.9**

GND CON  
**121.7**

UNICOM  
**122.95**



Use I-TFM DME when on the localizer course.

Remain within 10 NM

NORRM INT I-TFM 6.2 (6000)

GS 3.00° TCH 50

2900 175° 355° 2900

3.7 NM 1.2 NM

VGSi and ILS glidepath not coincident (VGSi Angle 3.00/TCH 54).

I-TFM 2.5 I-TFM 1.3

ELEV 1300 TDZE 1299

7199 X 150 7199 X 75 5002 X 75 4214 35L 35R 31 35L 35R 31

TWR 1349

355°

FAF to MAP 4.9 NM

| Knots   | 60   | 90   | 120  | 150  | 180  |
|---------|------|------|------|------|------|
| Min:Sec | 4:48 | 3:12 | 2:24 | 1:55 | 1:36 |

| CATEGORY  | A      | B           | C                       | D                     |
|-----------|--------|-------------|-------------------------|-----------------------|
| S-ILS 35R | 1499-½ |             | 200 (200-½)             |                       |
| S-LOC 35R | 1740-½ | 441 (500-½) | 1740-⅞                  | 441 (500-⅞)           |
| CIRCLING  | 1780-1 | 480 (500-1) | 1880-1½<br>580 (600-1½) | 1880-2<br>580 (600-2) |

HIRL Rwy 17L-35R  
MIRL Rwy 13-31  
and 17R-35L  
REIL Rwy 17R and 35L