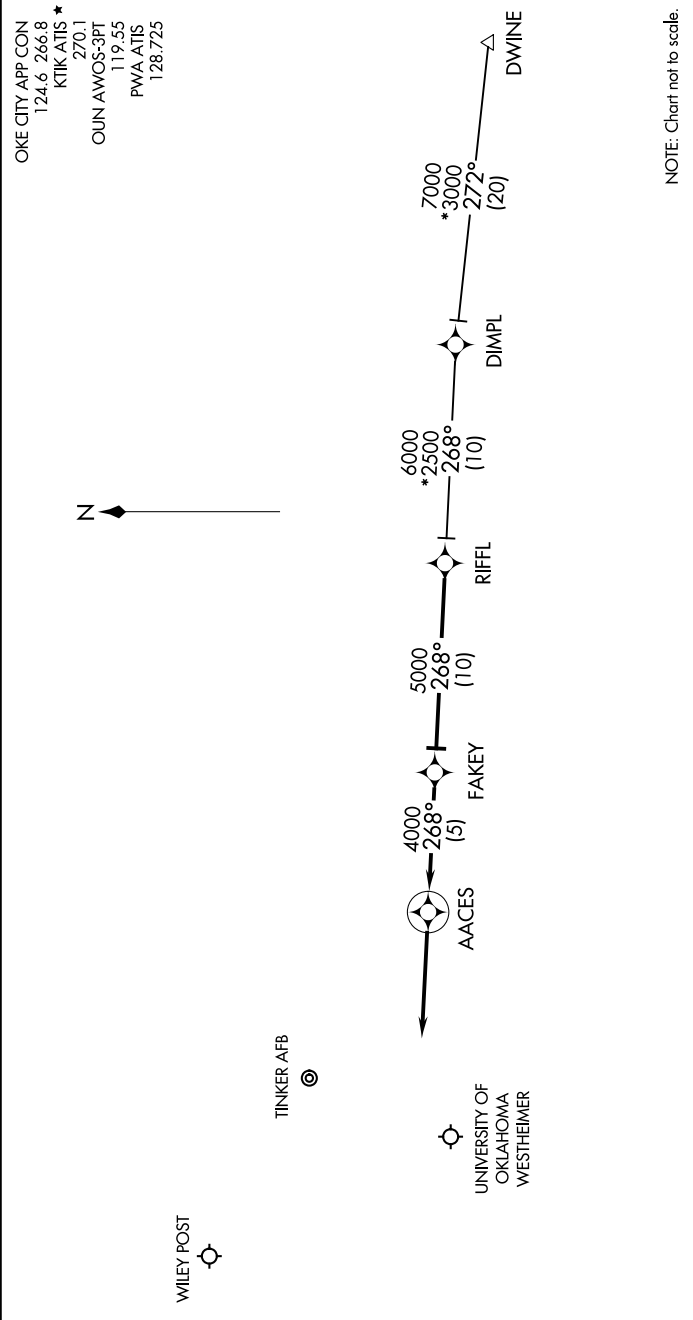


SC-1, 10 JUL 2025 to 07 AUG 2025



NOTE: Chart not to scale.

ARRIVAL ROUTE DESCRIPTION

DIMPL TRANSITION (DIMPL.FAKEY1):

DWINE TRANSITION (DWINE.FAKEY1):

From RIFFL on track 268° to FAKEY .

LANDING OUN/KTIK/PWA: From FAKEY on track 268° to AACES, then on track 268° . Expect radar vectors to final approach course.

NOTE: RADAR required.
NOTE: RNAV 1.
NOTE: DME/DME/IRU or GPS required.

SC-1, 10 JUL 2025 to 07 AUG 2025