

TACAN RWY 25

TACAN	LRF	APCH CRS	Rwy ldg
Chan	29	259°	TDZE
			Arprt Elev

[USAF]

LITTLE ROCK AFB (KLRF)

⚠

\* When ALS inop, increase CAT AB RVR to 55, vis to 1 mile; CAT CDE vis to 1½ miles.

\*\* Circling not authorized S of Rwy 07-25.

ALS-F-2

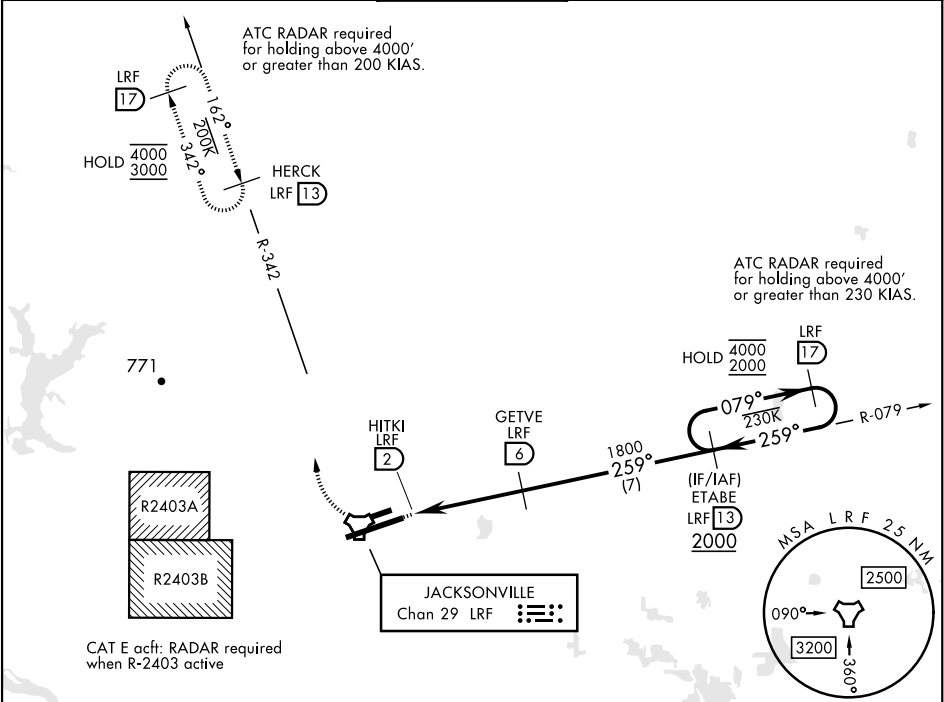
A

⏏

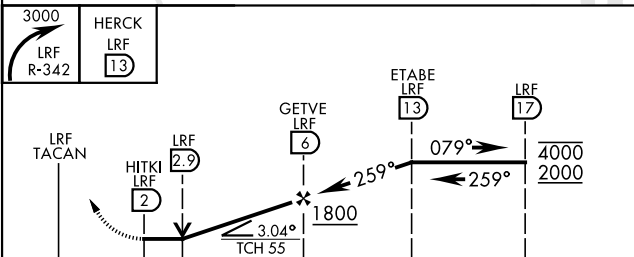
MISSED APPROACH: Climbing right turn to 3000 to intercept LRF R-342 outbound to HERCK and hold as published.

ALTERNATE MISSED APPROACH: Climbing to 3000, fly runway heading until LRF 2 DME, then turn right heading 360°, EFC from ATC.

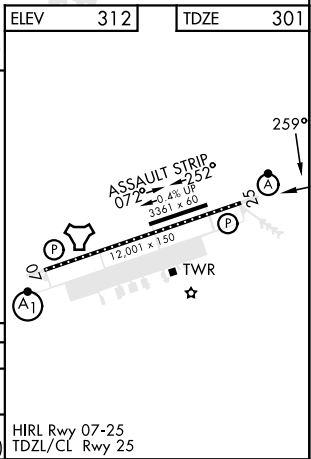
ATIS ★	APP CON	TOWER	GND CON	CLNC DEL ★
119.175 251.1	119.5 306.2	120.6 269.075	132.8 275.8	253.5



EMERG SAFE ALT 100 NM 4000



CATEGORY	A	B	C	D	E
S-25 *	800/24 499 (500-½)		800/50 499 (500-1)		
CIRCLING **	800-1 488 (500-1)	920-1 608 (700-1)	920-1¾ 608 (700-1¾)	1040-2¼ 728 (800-2¼)	1040-2½ 728 (800-2½)



TACAN RWY 25

SC-1, 10 JUL 2025 to 07 AUG 2025

SC-1, 10 JUL 2025 to 07 AUG 2025