

JACKSONVILLE, ARKANSAS

RNAV (GPS) RWY 7

WAAS CH 97202 W07A	APCH CRS 072°	Rwy ldg TDZE Arpt Elev	12,001 310 312
--------------------------	------------------	------------------------------	----------------------

- (USAF)

LITTLE ROCK AFB (KLRF)

RNP APCH-GPS

▼ * When ALS inop, increase RVR to 40, vis to 3/4 mile.
** When ALS inop, increase vis to 1 3/8 miles.

ALSF-1

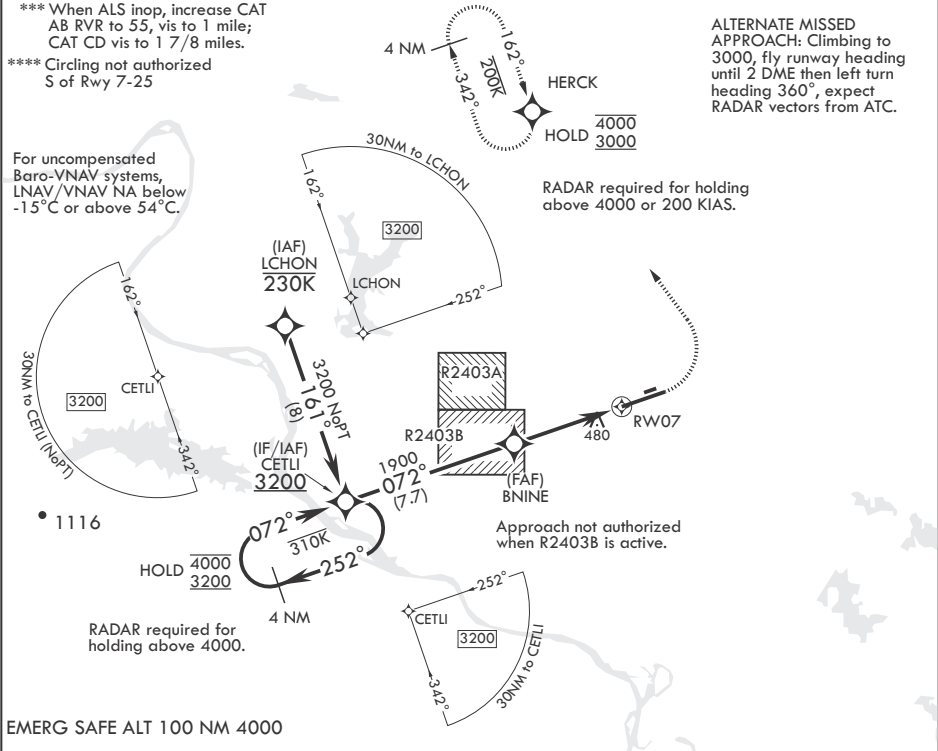


MISSED APPROACH: Climb to 1000 then climb left turn to 3000 direct HERCK and hold.

ATIS★	APP CON/DEP CON	TOWER	GND CON	CLNC DEL★
119.175 251.1	119.5 306.2	120.6 269.075	132.8 275.8	253.5

*** When ALS inop, increase CAT
AB RVR to 55, vis to 1 mile;
CAT CD vis to 1 7/8 miles.
**** Circling not authorized
S of Rwy 7-25

For uncompensated
Baro-VNAV systems,
LNAV/VNAV NA below
-15°C or above 54°C.



EMERG SAFE ALT 100 NM 4000

4 NM Holding Pattern

4000 3200

252° 072°

CETLI

BNINE

1900

2.1 NM to RWY 07

RWY 07

4.9 NM

GP 3.00° TCH 49

1000 3000

HERCK

ELEV 312

TDZE 310

ASSAULT STRIP

0.4% UP

3361 x 60

072° 252°

12,001 x 150

TWR BCN

CATEGORY	A	B	C	D
LPV DA*	510/24	200	(200-½)	
LNAV/VNAV DA**	791/50	481	(500-1)	
LNAV MDA***	980/24	670 (700-½)	980-1½ 670 (700-1½)	
CIRCLING****	980-1	668 (700-1)	980-1⅞ 668 (700-1⅞)	1040-2¼ 728 (800-2¼)

HIRL Rwy 7-25
TDZL/CL Rwy 25

JACKSONVILLE, ARKANSAS

34°55'N - 92°09'W

LITTLE ROCK AFB (KLRF)

Orig 11JUL24

RNAV (GPS) RWY 7

SC-1, 10 JUL 2025 to 07 AUG 2025

SC-1, 10 JUL 2025 to 07 AUG 2025