


JACKSONVILLE, ARKANSAS

RNAV (GPS) RWY 25

WAAS CH 67565 W25A	APCH CRS 252°	Rwy ldg TDZE Arpt Elev	12,001 301 312
--------------------------	------------------	------------------------------	----------------------

- (USAF)

LITTLE ROCK AFB (KLRF)

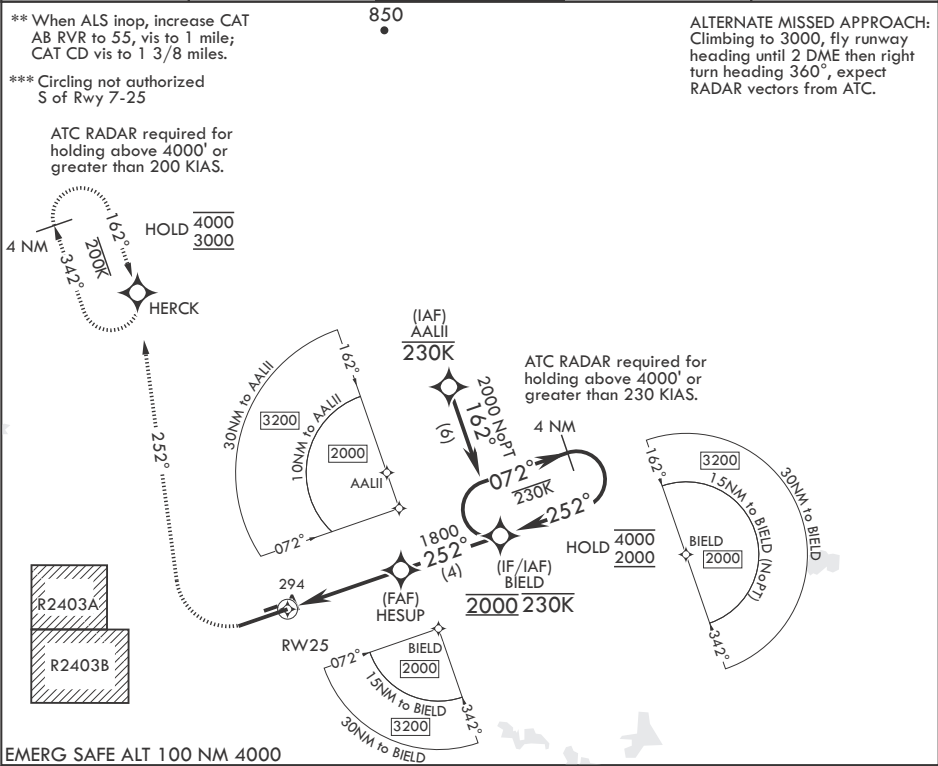
RNP APCH - GPS		ALSIF-2 	MISSED APPROACH: Climb to 900 then climbing right turn to 3000 direct HERCK and hold.	
RADAR required				
▼ * When ALS inop, increase RVR to 40, vis to 3/4 mile. When TDZL/CL inop increase RVR to 24.				
ATIS★ 119.175 251.1	APP CON/DEP CON 119.5 306.2	TOWER 120.6 269.075	GND CON 132.8 275.8	CLNC DEL★ 253.5

** When ALS inop, increase CAT
AB RVR to 55, vis to 1 mile;
CAT CD vis to 1 3/8 miles.





*** Circling not authorized
S of Rwy 7-25

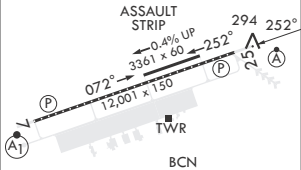
ATC RADAR required for
holding above 4000' or
greater than 200 KIAS.

ALTERNATE MISSED APPROACH:
Climbing to 3000, fly runway
heading until 2 DME then right
turn heading 360°, expect
RADAR vectors from ATC.



EMERG SAFE ALT 100 NM 4000

 		ELEV 312		TDZE 301	
 		BIELD		4 NM Holding Pattern	
1.4 NM to RWY 25		252°		4000	
4.6 NM		1800		2000	
GP 3.00°		TCH 56			
CATEGORY	A	B	C	D	
LPV DA*	501/18	200	(200-1/2)		
LNAV MDA**	780/24 479 (500-1/2)	780/50 479 (500-1)			
CIRCLING***	780-1 468 (500-1)	920-1 608 (700-1)	920-1 608 (700-1)	1040-2 728 (800-2 1/4)	



JACKSONVILLE, ARKANSAS

34°55'N - 92°09'W

LITTLE ROCK AFB (KLRF)

Orig 10AUG23

RNAV (GPS) RWY 25

SC-1, 10 JUL 2025 to 07 AUG 2025

SC-1, 10 JUL 2025 to 07 AUG 2025