

ILS RWY 25 (CAT II)

LOC I-TYV <b>109.9</b>	APCH CRS <b>252°</b>	Rwy Idg TDZE Arpt Elev <b>12,001</b> <b>301</b> <b>312</b>	[USAF]	LITTLE ROCK AFB (KLRF)
RNP APCH. RNAV1-GPS or RADAR required.			ALSF-2	MISSED APPROACH: Climb to 900 then climbing right turn to 3000 direct HERCK and hold.

ATIS ★ <b>119.175 251.1</b>	APP CON <b>119.5 306.2</b>	TOWER <b>120.6 269.075</b>	GND CON <b>132.8 275.8</b>	CLNC DEL ★ <b>253.5</b>
--------------------------------	-------------------------------	-------------------------------	-------------------------------	----------------------------

CATEGORY II ILS-SPECIAL  
AIRCREW & AIRCRAFT  
CERTIFICATION REQUIRED

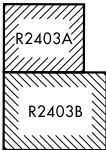
ALTERNATE MISSED APPROACH:  
Climbing to 3000 fly runway heading  
until 2 DME, then turn right heading 360°,  
expect further clearance from ATC.

PROCEDURE EFFECTIVE  
BY NOTAM

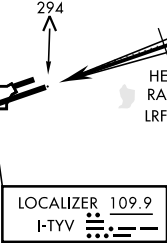


ATC RADAR required for  
holding above 4000' or  
greater than 200 KIAS.

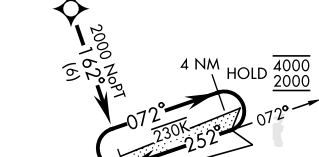
JACKSONVILLE  
Chan 29 LRF  
(109.2)



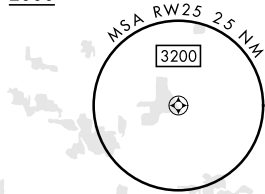
CAT E Aft: RADAR required  
when R-2403 active



(IAF) AALI entry NA  
for CAT E aircraft.



ATC RADAR required for  
holding above 4000' or  
greater than 230 KIAS.



823

EMERG SAFE ALT 100 NM 4000

900

3000

HERCK

LRF TACAN

HESUP RADAR LRF 6.1

BIELD LRF 10

4 NM Holding Pattern

072°

252°

252°

1800

4000

2000

GS 3.00°

TCH 56

993

4.6 NM

CATEGORY	A	B	C	D	E
S-ILS 25	RA 94/12 100 DA 401				

ELEV 312

TDZE 301

ASSAULT STRIP

072°

252°

0.4% UP

3361 × 60

12,001 × 150

TWR

HIRL Rwy 07-25

TDZL/CL Rwy 25